

SHIPCO[®]
PUMPS

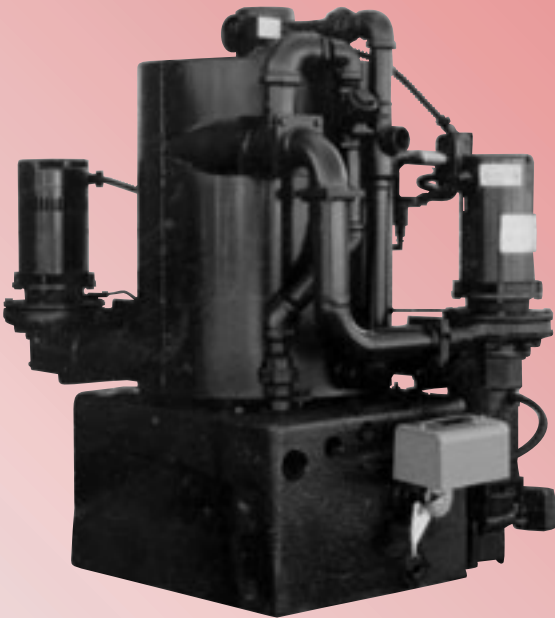
SHIPPENSBURG PUMP CO., INC.
P.O. BOX 279, SHIPPENSBURG, PA 17257
PHONE 717-532-7321 • FAX 717-532-7704
WWW.SHIPCOPUMPS.COM

PRIDE

QUALITY

CRAFTSMANSHIP

BULLETIN 110
Revised 10/08



TYPE BVC

**Vacuum
and
Condensate
Pumps with Cast Iron
Condensate Receivers
or Steel Receivers 1/4" Thick**

Capacities from 10,000 sq. ft. EDR
to 150,000 sq. ft. EDR

SHIPCO[®]
PUMPS are equipped with Mechanical Seals rated for temperatures
up to 250°F as standard.
Higher temperature seals and special faces available upon request.

CAP. SQ. FT. EDR	CATALOG No.	PUMP PERFORMANCE			AIR PUMP HP at		WATER PUMP HP at	DISCH. SIZE	REC. CAP. GALLONS	INLET SIZE
		RATING at 5 1/2" HG at 160°F CFM	GPM	PSIG	3500	1750	3500			
10,000	100 BVC 101 BVC 102 BVC 102.5 BVC 103 BVC	5.8	10	10 15 20 25 30	3/4	-	1/3 1/3 1/2 3/4 3/4	1 1/2	25	2
15,000	150 BVC 151 BVC 152 BVC 152.5 BVC 153 BVC	8	15	10 15 20 25 30	1	-	1/3 1/3 1/2 3/4 1	1 1/2	25	2
20,000	200 BVC 201 BVC 202 BVC 202.5 BVC 203 BVC	8	20	10 15 20 25 30	1	-	1/3 1/2 3/4 1 1	1 1/2	25	2
25,000	250 BVC 251 BVC 252 BVC 252.5 BVC 253 BVC	12	25	10 15 20 25 30	1 1/2	-	1/2 3/4 1 1 1/2 1 1/2	1 1/2	25	2
30,000	300 BVC 301 BVC 302 BVC 302.5 BVC 303 BVC	12	30	10 15 20 25 30	1 1/2	-	1/2 3/4 1 1 1/2 1 1/2	1 1/2	25	2
40,000	400 BVC 401 BVC 402 BVC 402.5 BVC 403 BVC	18	40	10 15 20 25 30	2	-	1 1 1 1 1/2 2	1 1/2	37	3
50,000	500 BVC 501 BVC 502 BVC 502.5 BVC 503 BVC	18	50	10 15 20 25 30	2	-	1 1 1/2 1 1/2 2 3	1 1/2	57	3
65,000	650 BVC 651 BVC 652 BVC 652.5 BVC 653 BVC	26	60	10 15 20 25 30	3	3	2 2 2 3 3	1 1/2	80	4
80,000	800 BVC 801 BVC 802 BVC 802.5 BVC 803 BVC	26	70	10 15 20 25 30	3	3	2 3 3 3 3	2	80	4
100,000	1000 BVC 1001 BVC 1002 BVC 1002.5 BVC 1003 BVC	52	85	10 15 20 25 30	5	5	2 3 3 3 3	2	125	4
125,000	1250 BVC 1251 BVC 1252 BVC 1252.5 BVC 1253 BVC	52	100	10 15 20 25 30	5	5	3 3 3 3 5	2	125	4
150,000	1500 BVC 1501 BVC 1502 BVC 1502.5 BVC 1503 BVC	52	120	10 15 20 25 30	5	5	3 3 3 3 5	2	125	4

Type BVC Vacuum Condensate Pumps are efficient, quiet, and dependable. Our Multi-Jet Design has proven to be an effective and reliable means of removing air and lifting condensate in your return system. The Centrifugal SHIPCO® Pumps are cast iron bronze fitted and virtually maintenance free when compared to close tolerance vacuum producers.

Our illustration shows the integral parts and design configuration of the BVC units. The vacuum chamber requires a cold water connection to the automatic makeup valve. This assures a constant level of water in vacuum producer for optimum performance.

BVC units are available completely packaged, including electrical controls when specified. Electrical controls are available for most NEMA and J.I.C. specifications.

Water is pumped from the circular chamber to the nozzle by the centrifugal pump.

High velocity water going through the multiple nozzle entrains air at the vacuum and compresses it in the ejector.

It then re-enters the circular chamber where the air (RED ARROWS) is separated from the water (BLACK ARROWS) which re-circulates to the pump.

