

DIAGRAM "A"

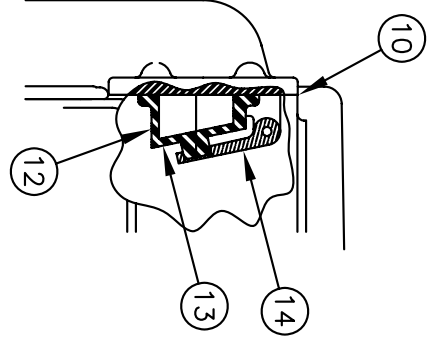
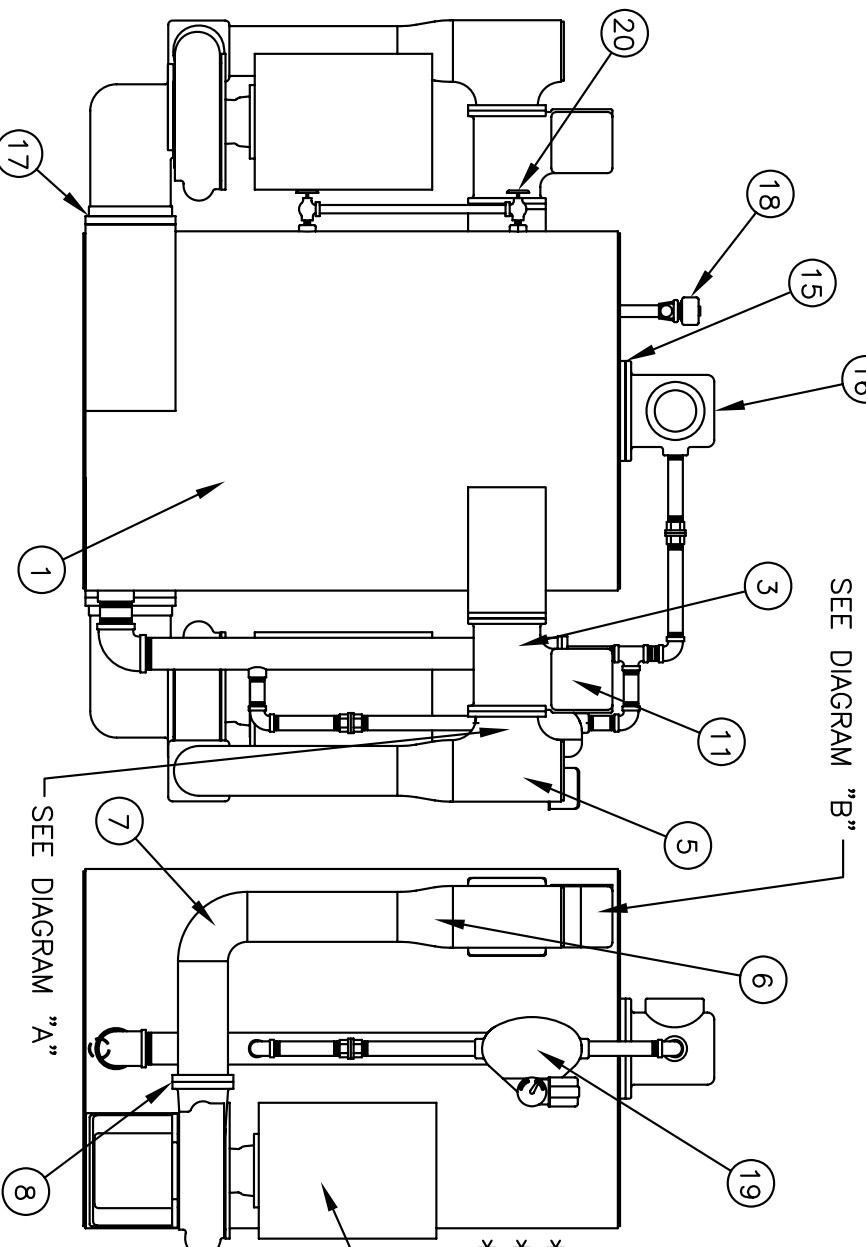


DIAGRAM "B"



SEE DIAGRAM "B"

SEE DIAGRAM "A"

PARTS LIST

NO.	DESCRIPTION	PART NUMBER	NO. REQ'D.	
			SHIP'G	INP'X
1	RECEIVER (STEEL)	SDPV-00259	1	1
2	GASKET (RECEIVER SIDE)	SDPG-03842	1	2
3	NOZZLE BODY	SDPV-00327	1	2
4	MANIFOLD (MANIFOLD SIDE)	SDPG-03844	1	2
5	WELD TEE	N/A	1	2
6	WELDING REDUCER	N/A	1	2
7	WELD ELBOW	N/A	1	2
8	GASKET (PUMP DISCHARGE)	SDPG-03843	1	2
9	PUMP	—	1	2
10	GASKET (CHECK VALVE)	SDPG-03847	1	2
11	CHECK VALVE	SDPV-00340	1	2
12	CHECK VALVE BODY	SDPC-00112	1	2
13	CHECK VALVE FLAPPER	SDPC-00110	1	2
14	FLAPPER ARM	SDPF-00099	1	2
15	GASKET (AIR DOME)	SDPG-03858	1	1
16	AIR DOME	SDPV-00013	1	1
17	GASKET (SUCT. HOUSING)	SDPG-03822	1	2
18	SOLENOID VALVE	S8210B20	1	1
19	EXTERNAL FLOAT SWITCH	SDPS-00290	1	1
20	GAUGE GLASS	S30030020	1	1
21	EJECTOR	SDPV-00328	1	2
22	BRASS NOZZLE	SDPN-00022	1	2
* 23	BLANK FLG. (PUMP SUCT.)	S3333180	1	—
* 24	BLANK FLG. (VAC. SIDE)	S3333181	1	—

* DENOTES PARTS NOT SHOWN

SHIPCO®
SPUMPS
 MANUFACTURED BY
 SHIPPENSBURG PUMP COMPANY INC.
 P.O. Box 279 Shippenburg, Pa. 17257
 PHONE 717 532-7321 / FAX 717 532-7704
 WWW.SHIPCO.PUMPS.COM
 SHIPCO® IS A REGISTERED TRADEMARK OF SHIPPENSBURG PUMP CO. INC.

TYPE BV
 Vacuum Receiver - 53 to 100 CFM

DRAWN BY	DATE	REVISION
S.A.D.	7/09	.3
DIMENSION PRINT		
40008-1		
Section BV Page 0650		