

SHIPCO PUMPS

MANUFACTURED BY

SHIPPENSBURG PUMP COMPANY INC.

P.O. Box 279 Shippenburg, Pa. 17257

PHONE 717 532-7321 / FAX 717 532-7704

WWW.SHIPCO PUMPS.COM

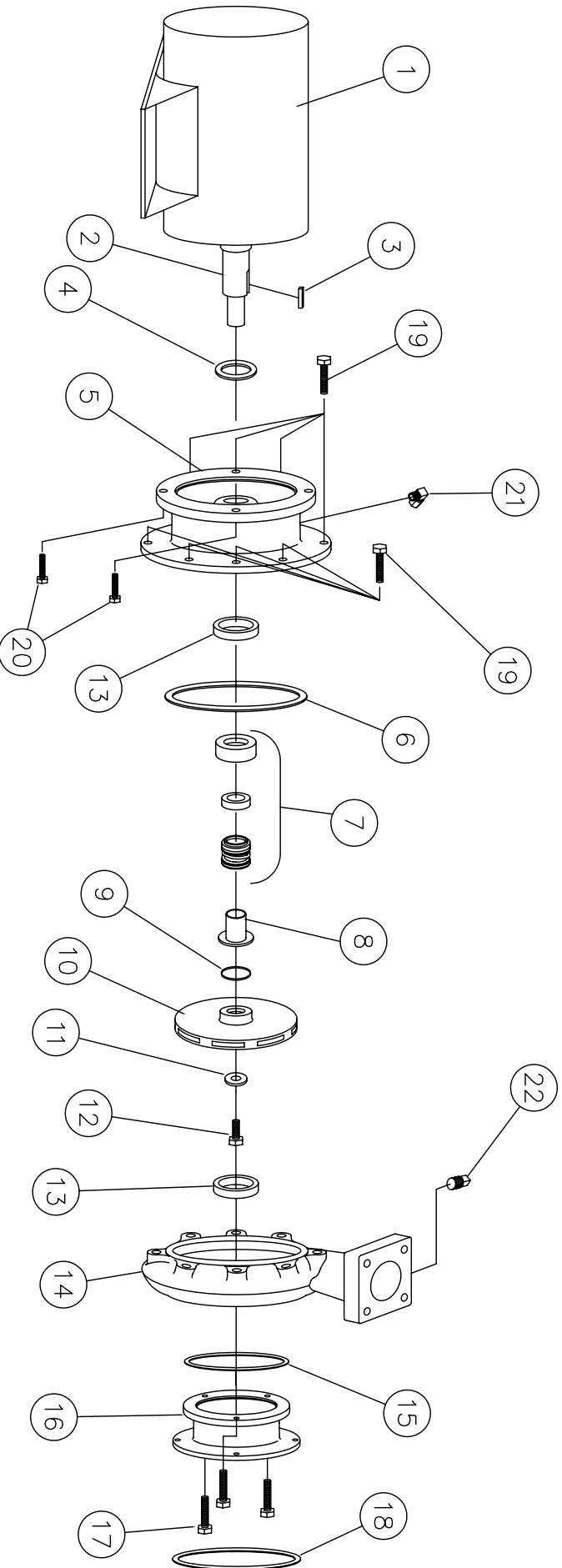
SHIPCO® IS A REGISTERED TRADEMARK OF SHIPPENSBURG PUMP CO., INC.

129 Model D Horiz End Suction
JM Frame's 213 & 215
130 GPM & Less (3500 RPM)

DRAWN BY J.BROOKENS DATE 9/04 REVISION .4

PARTS LIST # PL-82912

QUEB PART # 129DHHJM-(35)L



PARTS LIST

NO.	DESCRIPTION	PART NO.	QTY.
1	MOTOR	JM FRAME	1
2	MOTOR SHAFT		1
3	KEY (MOTOR TO IMPELLER)	KEYBAR-S8-019-OVR	1
4	WATER SLINGER	SLINGER-SDWS9998	1
5	PUMP HEAD	HEAD-SDPH00063-1	1
6	HEAD GASKET (O-RING)	ORING-SDP000088	1
7	MECHANICAL SEAL 1 1/8"	MCHSEAL-SDPSC00155	1
8	SHAFT SLEEVE	SHTSLVE-SDPC00218	1
9	"O" RING (SHAFT SLEEVE)	ORING-SDP000051	1
10	IMPELLER	IMP-SDPI00065	1
11	IMPELLER WASHER	IMPWHR-SDPRW00237	1
12	CAPSCREW 3/8 x 1"	FTRCP-HS8-0038C-0100-2	1
13	WEARING RING	WRGRING-SDPWR00131	2
14	PUMP CASE	CASE-SDPC00061-A	1
15	SUCTION HOUSING	GASKET-SDPG03828	1
16	SUCTION HOUSING GASKET	SUCHSG-SDPF00050-C	1
17	CAPSCREWS (SUCTION HOUSING TO CASE) 3/8 x 1 1/4"	FTRCP-SHZ-0038C-0125-2	3
18	SUCTION GASKET	FLG-ASA-SP15-GKT-0300	1
19	CAPSCREWS (HEAD TO CASE) 3/8 x 1"	FTRCP-SHZ-0038C-0100-2	8
20	CAPSCREWS (MOTOR TO HEAD) 1/2 x 1"	FTRCP-SHZ-0050C-0100-S	4
21	1/4" 90° COMPRESSION FITTING	CMPTFG-R-MELL-038-025	1
22	1/4" PIPE PLUG	PF-PLUGSQ-SLD-B-0025	1