



MANUFACTURED BY

SHIPPENSBURG PUMP COMPANY INC.

P.O. Box 279 Shippenburg, Pa. 17257

PHONE 717 532-7321 / FAX 717 532-7704

WWW.SHIPCO.PUMPS.COM

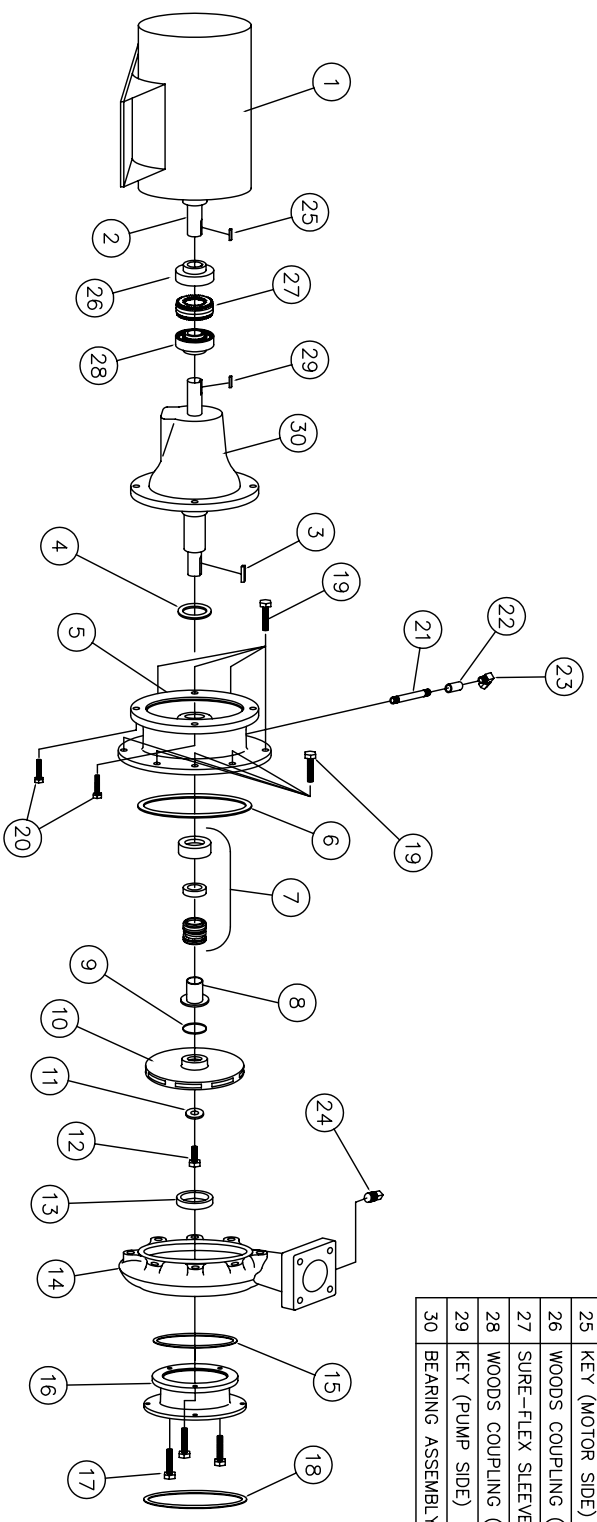
SHIPCO® IS A REGISTERED TRADEMARK OF SHIPPENSBURG PUMP CO., INC.

**129 Model D Horizontal
T/JM Frame Three Phase -130 GPM
3HP - 7 1/2HP Flexible Coupled**

DRAWN BY J.BROOKENS DATE 3/05 REVISION .5

PARTS LIST # PL-82935

QUBE PART # 129FDHJM-(35)S



PARTS LIST

NO.	DESCRIPTION	PART NO.	QTY.
1	MOTOR / BEARING HOUSING	T/JM FRAME	1
2	MOTOR SHAFT		1
3	KEY (MOTOR TO IMPELLER)	KEYBAR-S8-019-OVR	1
4	WATER SLINGER	SLINGER-SDWS99998	1
5	PUMP HEAD	HEAD-SDPH00063	1
6	HEAD GASKET (O-RING)	ORING-SDP000083	1
7	MECHANICAL SEAL 1 1/8"	MCHSEAL-SDPS00155	1
8	SHAFT SLEEVE	SHTSLVE-SDPC00218	1
9	"O" RING (SHAFT SLEEVE)	ORING-SDP000051	1
10	IMPELLER	IMP-SDPI000065	1
11	IMPELLER WASHER	IMPWHR-SDPRW00237	1
12	CAPSCREW 3/8 x 1"	FTRCP-HSB-0038C-0100-2	1
13	WEARING RING	WRGRING-SDPWR00131	1
14	PUMP CASE	CASE-SDPC00061-A	1
15	SUCTION HOUSING GASKET	GASKET-SDPG03828	1
16	SUCTION HOUSING	SUCHSG-SDPF00050-C	1
17	CAPSCREWS (SUCTION HOUSING TO CASE) 3/8 x 1 1/4"	FTRCP-5HZ-0038C-0125-2	3
18	SUCTION GASKET	GASKET-SDPG03848	1
19	CAPSCREWS (HEAD TO CASE) 3/8 x 1"	FTRCP-5HZ-0038C-0100-2	8
20	CAPSCREWS (MOTOR TO HEAD) 5/8 x 3/4"	FTRCP-5HZ-0038C-0075-S	4
21	1/4" NIPPLE 1/4 x 2 1/2	NIPPLE-B-0025x250	1
22	1/4" FULL COUPLING	CLP-FCB-0025	1
23	1/4" 90° COMPRESSION FITTING	CMPTG-R-MELL-038-025	1
24	1/4" PIPE PLUG	PF-PLUGSQ-SLD-B-0025	1
25	KEY (MOTOR SIDE)	PER MOTOR ORDERED	1
26	WOODS COUPLING (MOTOR)	PER MOTOR ORDERED	1
27	SURE-FLEX SLEEVE	PER MOTOR ORDERED	1
28	WOODS COUPLING (PUMP SIDE)	PER MOTOR ORDERED	1
29	KEY (PUMP SIDE)	PER MOTOR ORDERED	1
30	BEARING ASSEMBLY	BRGHSQ-SDPBH00233	1