

SHIPCO® PUMPS

MANUFACTURED BY
 SHIPPENSBURG PUMP COMPANY INC.
 P.O. Box 279 Shippenburg, Pa. 17257
 PHONE 717 532-7321 / FAX 717 532-7704
 WWW.SHIPCO PUMPS.COM

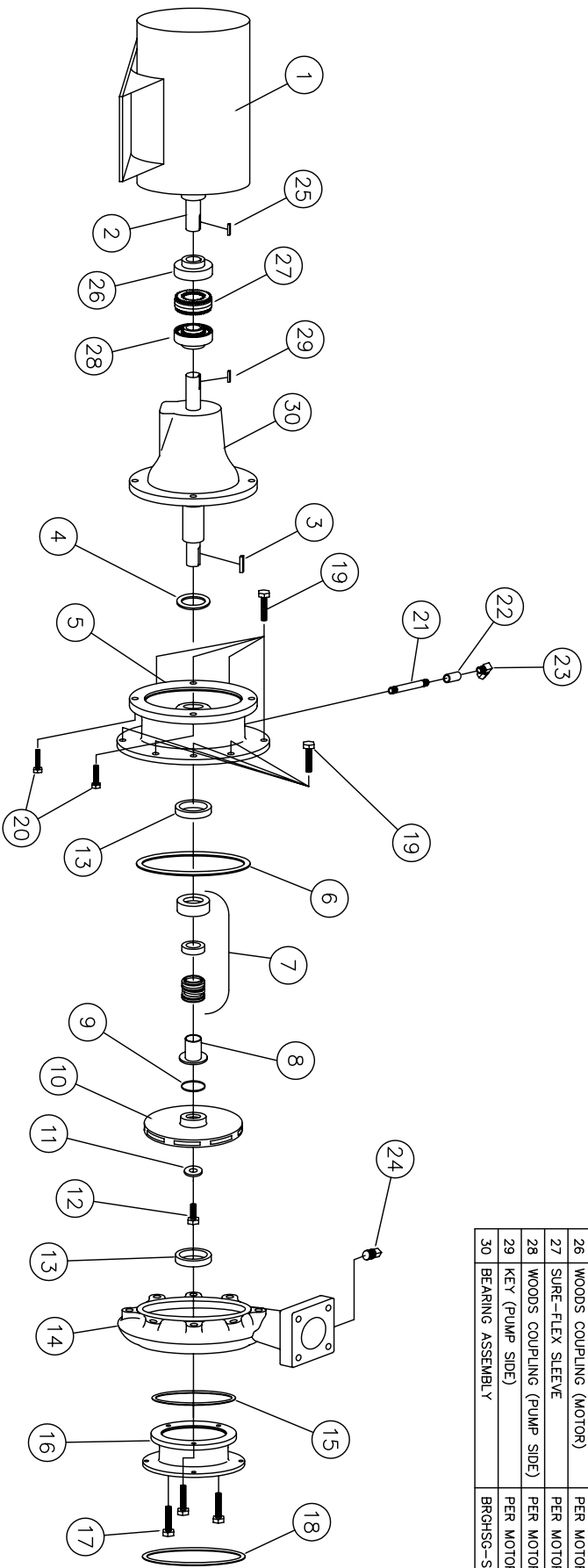
SHIPCO® IS A REGISTERED TRADEMARK OF SHIPPENSBURG PUMP CO., INC.

129 Model D Horizontal T/JM Frame Three Phase + 130 GPM 10HP - 25HP Flexible Coupled

DRAWN BY M. REED DATE 3/05 REVISION .0

PARTS LIST # PL-82939-A

QUOTE PART # 129AFDHJM+(35)L



PARTS LIST

NO.	DESCRIPTION	PART NO.	QTY.
1	MOTOR / BEARING HOUSING	T/JM FRAME	1
2	MOTOR SHAFT	KEYBAR-S8-019-OVR	1
3	KEY (MOTOR TO IMPELLER)	SLINGER-SDWS99998	1
4	WATER SLINGER	HEAD-SDPH00063-1-A	1
5	PUMP HEAD	ORING-SDP000083	1
6	HEAD GASKET (O-RING)	MCHSEAL-SDPSC00155	1
7	MECHANICAL SEAL 1 1/8"	SHTSLVE-SDPC00218	1
8	SHAFT SLEEVE	ORING-SDP000051	1
9	"O" RING (SHAFT SLEEVE)	IMP-SDPI00661	1
10	IMPELLER	IMPWHR-SDPRW00237	1
11	IMPELLER WASHER	FTRPC-HS8-0038C-0100-2	1
12	CAPSCREW 3/8 x 1"	WGRING-SDPWR00653	2
13	WEARING RING	CASE-SDPC00061-D	1
14	PUMP CASE	SUCHSG-SDPF00025	1
15	SUCTION HOUSING GASKET	GASKET-SDPG03836	1
16	SUCTION HOUSING	FTRPC-SHZ-0038C-0125-2	3
17	CAPSCREWS (SUCTION HOUSING TO CASE)	GASKET-SDPG03857	1
18	SUCTION GASKET	FTRPC-SHZ-0050C-0100-2	8
19	CAPSCREWS (HEAD TO CASE)	FTRPC-SHZ-0050C-0100-S	4
20	CAPSCREWS (MOTOR TO HEAD)	NIPPLE-B-0025x250	1
21	1/4" NIPPLE 1/4 x 2 1/2	CLP-FCB-0025	1
22	1/4" FULL COUPLING	CMPTG-R-MEL-038-025	1
23	1/4" 90° COMPRESSION FITTING	PF-PLUSQ-SLD-B-0025	1
24	1/4" PIPE PLUG	PER MOTOR ORDERED	8
25	KEY (MOTOR SIDE)	PER MOTOR ORDERED	4
26	WOODS COUPLING (MOTOR)	PER MOTOR ORDERED	1
27	SURE-FLEX SLEEVE	PER MOTOR ORDERED	1
28	WOODS COUPLING (PUMP SIDE)	PER MOTOR ORDERED	1
29	KEY (PUMP SIDE)	BRHSG-SDPBH00229	1
30	BEARING ASSEMBLY		1