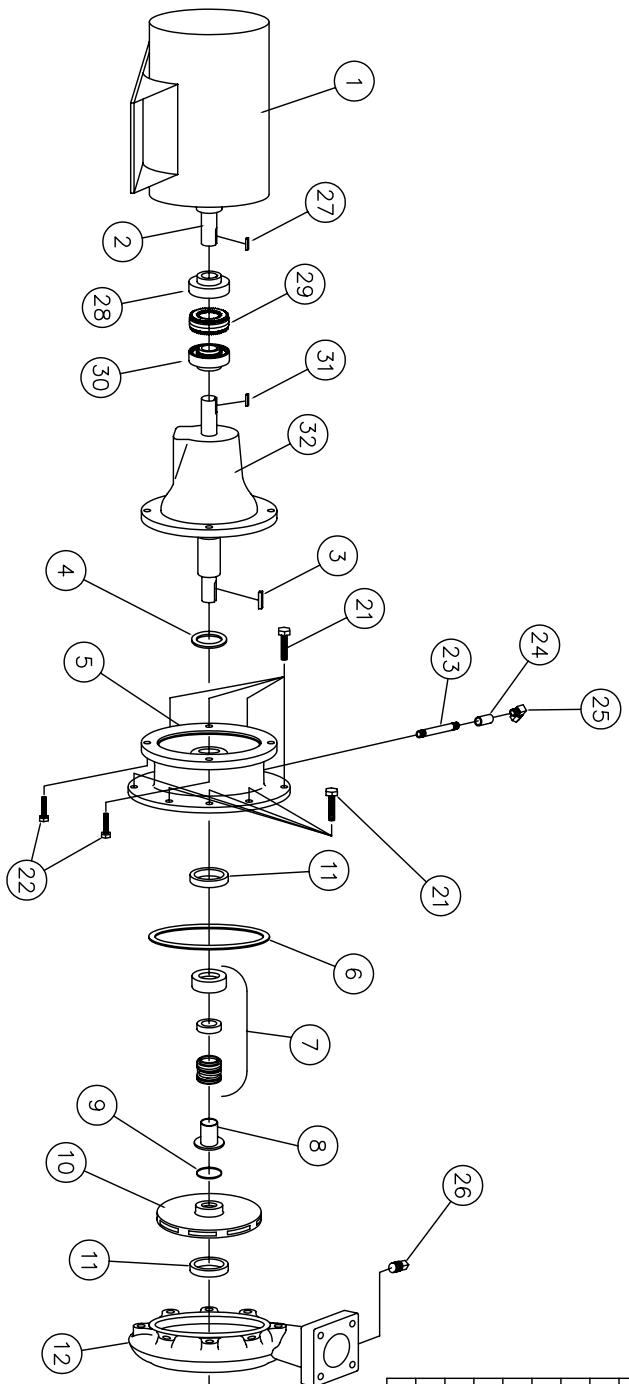




MANUFACTURED BY  
 SHIPPENSBURG PUMP COMPANY INC.  
 P.O. Box 279 Shippenburg, Pa. 17257  
 PHONE 717 532-7321 / FAX 717 532-7704  
 WWW.SHIPCO.PUMPS.COM  
 SHIPCO® IS A REGISTERED TRADEMARK OF SHIPPENSBURG PUMP CO., INC.

**129 Model P Horizontal  
 T/JM Frame Three Phase + 130 GPM  
 3HP - 7 1/2HP Flexible Coupled**

DRAWN BY M. REED DATE 3/05 REVISION .0  
 PARTS LIST # PL-82944-A  
 QUBE PART # 129AFPJM+(35)S



PARTS LIST

NO.	DESCRIPTION	PART NO.	QTY.
1	MOTOR / BEARING HOUSING	T/JM FRAME	1
2	MOTOR SHAFT		1
3	KEY (MOTOR TO IMPELLER)	KEYBAR-S8-019-OVR	1
4	WATER SLINGER	SLINGER-SDWS99998	1
5	PUMP HEAD	HEAD-SDPH00063-A	1
6	HEAD GASKET (O-RING)	ORING-SDP000083	1
7	MECHANICAL SEAL 1 1/8"	MCHSEAL-SDPS00155	1
8	SHAFT SLEEVE	SHTSLVE-SDPC00218	1
9	"O" RING (SHAFT SLEEVE)	ORING-SDP000051	1
10	IMPELLER	IMP-SDP100661	1
11	WEARING RING	WRGRING-SDPWR00653	2
12	PUMP CASE	CASE-SDPC00061-D	1
13	PROPELLER STEM	PROPSTM-SDPS00678	1
14	STRAIGHTENING VANES	STRVANE-SDPS00139	1
15	PROPELLER STEM BOLT	PROPSTM-SDPS00679	1
16	PROPELLER	PROPELR-SDP00660	1
17	SUCTION HOUSING GASKET	GASKET-SDPG03836	1
18	SUCTION HOUSING	SUCHSG-SDPF00025-A	1
19	CAPSCREWS (SUCTION HOUSING TO CASE) 3/8 x 1 1/4"	FTRCP-SHZ-0038C-0125-2	3
20	SUCTION GASKET	GASKET-SDPG03857	1
21	CAPSCREWS (HEAD TO CASE) 3/8 x 1"	FTRCP-SHZ-0038C-0100-2	8
22	CAPSCREWS (MOTOR TO HEAD) 3/8 x 3/4"	FTRCP-SHZ-0038C-0075-S	4
23	1/4" NIPPLE 1/4 x 2 1/2	NIPPLE-B-0025x250	1
24	1/4" FULL COUPLING	CLP-FCB-0025	1
25	1/4" 90° COMPRESSION FITTING	CMPTFG-R-MELL-038-025	1
26	1/4" PIPE PLUG	PF-PLUGSQ-SLD-B-0025	1
27	KEY (MOTOR SIDE)		1
28	WOODS COUPLING (MOTOR)	PER MOTOR ORDERED	1
29	SURE-FLEX SLEEVE	PER MOTOR ORDERED	1
30	WOODS COUPLING (PUMP SIDE)	PER MOTOR ORDERED	1
31	KEY (PUMP SIDE)	PER MOTOR ORDERED	1
32	BEARING ASSEMBLY	BRHSG-SDPBH00233	1
33	WOODRUFF KEY #405	KEYWOOD-WOODRUFF-#405	1
34	#10-32 SET SCREWS x 1/4" LG	FTRSET-S8-0010F-0025	2