

# SHIPCO PUMPS

MANUFACTURED BY

SHIPPENSBURG PUMP COMPANY INC.

P.O. Box 279 Shippenburg, Pa. 17257

PHONE 717 532-7321 / FAX 717 532-7704

WWW.SHIPCO PUMPS.COM

SHIPCO® IS A REGISTERED TRADEMARK OF SHIPPENSBURG PUMP CO., INC.

## 129 Model P Horiz End Suction

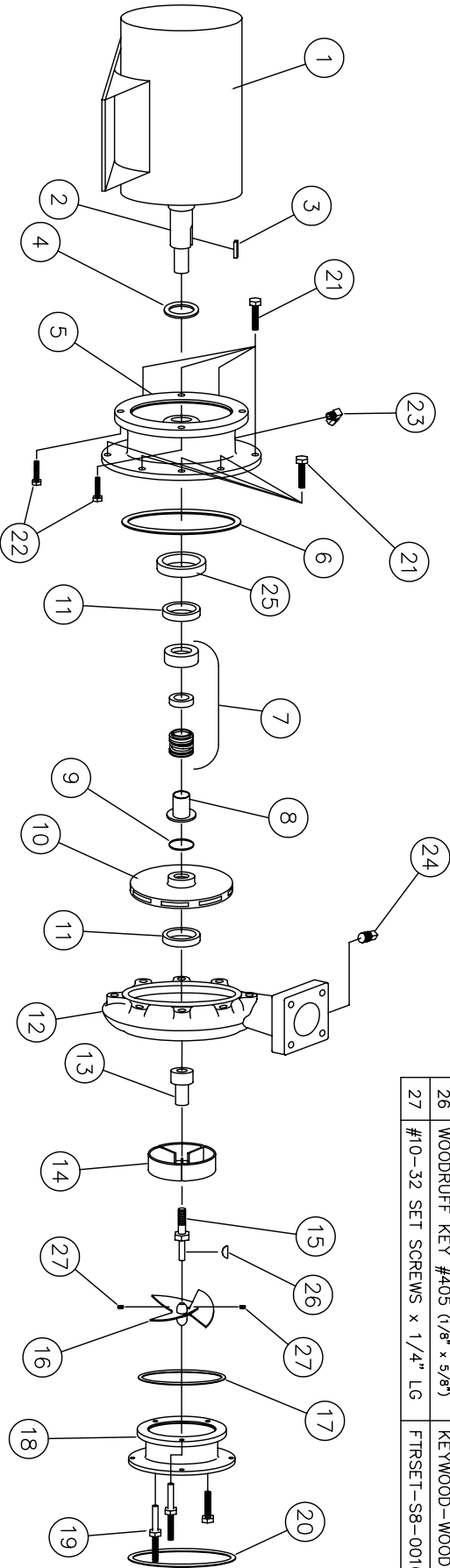
JM Frame's 254 & 256

Above 130 GPM (3500 RPM)

DRAWN BY M.LINEAWEAVER DATE 9/04 REVISION .5

PARTS LIST # PL-82953

QUBE PART # 129PHJM+(35)X



### PARTS LIST

NO.	DESCRIPTION	PART NO.	QTY.
1	MOTOR	JM FRAME	1
2	MOTOR SHAFT		1
3	KEY (MOTOR TO IMPELLER)	KEYBAR-S8-025-OVR	1
4	WATER SLINGER	SLINGER-SDWS99997	1
5	PUMP HEAD	HEAD-SDPH00017-A	1
6	HEAD GASKET (O-RING)	ORING-SDP000088	1
7	MECHANICAL SEAL 1 1/2"	MCHSEAL-SDPS00355	1
8	SHAFT SLEEVE	SHTSLVE-SDPC00302	1
9	"O" RING (SHAFT SLEEVE)	ORING-SDP000211	1
10	IMPELLER	IMP-SDPI00065-1-A	1
11	WEARING RING	WRGRING-SDPWR00131	2
12	PUMP CASE	CASE-SDPC00061-B	1
13	PROPELLER STEM	PROPSTM-SDPS00665	1
14	STRAIGHTENING VANES	STRVANE-SDPS00139	1
15	PROPELLER STEM BOLT	PROPSTM-SDPS00666	1
16	PROPELLER	PROPELR-SDPP00660	1
17	SUCTION HOUSING GASKET	GASKET-SDPG03836	1
18	SUCTION HOUSING	SUCHSG-SDPF00025-A	1
19	CAPSCREWS (SUCTION HOUSING TO CASE)	FTRCP-5HZ-0038C-0125-2	3
20	SUCTION GASKET	FLG-ASA-SP15-GKT-0400	1
21	CAPSCREWS (HEAD TO CASE)	FTRCP-5HZ-0038C-0100-2	8
22	CAPSCREWS (MOTOR TO HEAD)	FTRCP-5HZ-0038C-0075-S	4
23	1/4" 90° COMPRESSION FITTING	OMPFTG-R-MELL-038-025	1
24	1/4" PIPE PLUG	PF-PLUGSQ-SLD-B-0025	1
25	WEARING RING ADAPTER	WRGRING-SDPA00151	1
26	WOODRUFF KEY #405 (1/8" x 5/8")	KEYWOOD-WOODRUFF-#405	1
27	#10-32 SET SCREWS x 1/4" LG	FTRSET-S8-0010F-0025	2