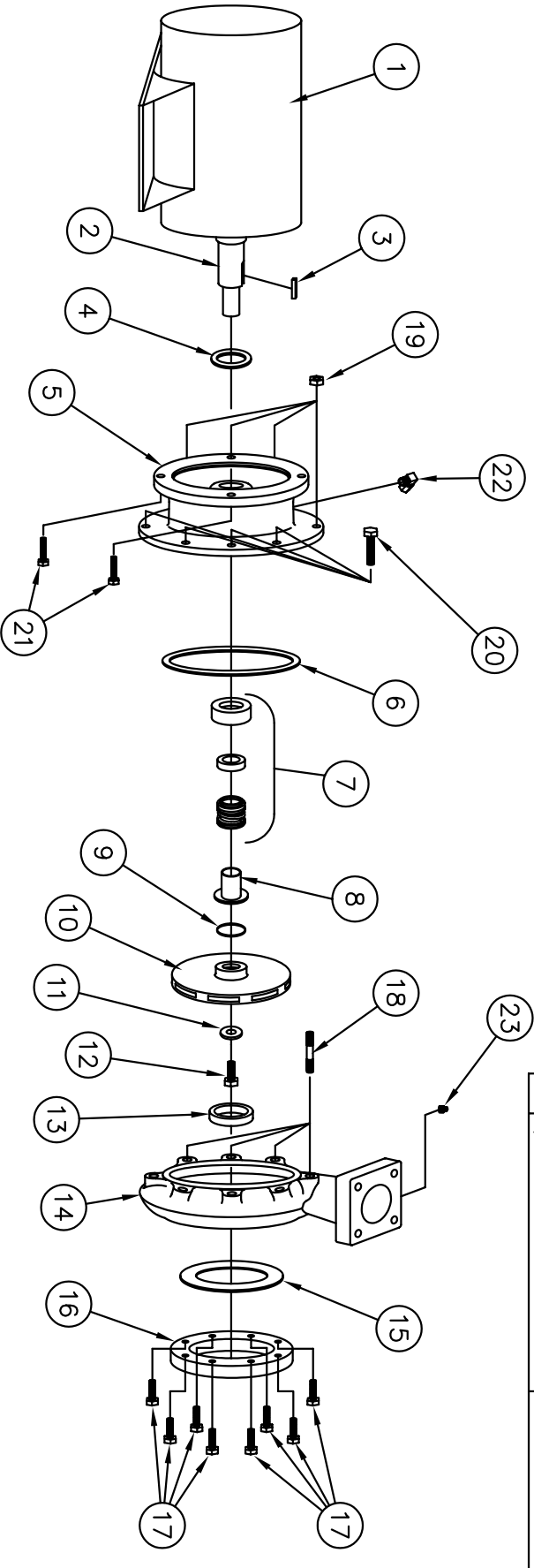


# SHIPCO PUMPS

MANUFACTURED BY  
 SHIPPENSBURG PUMP COMPANY INC.  
 P.O. Box 279 Shippensburg, Pa. 17257  
 PHONE 717 532-7321 / FAX 717 532-7704  
 WWW.SHIPCO PUMPS.COM

SHIPCO® IS A REGISTERED TRADEMARK OF SHIPPENSBURG PUMP CO., INC.  
 132 Model D Horiz End Suction  
 JM Frame's 254 & 256  
 1750 RPM

DRAWN BY V. COLLER	DATE 10/09	REVISION .0
PARTS LIST # PL-83210		
QUEB PART # 132DHJM(17)X		



PARTS LIST			
NO.	DESCRIPTION	PART NO.	QTY.
1	MOTOR	JM FRAME	1
2	MOTOR SHAFT		1
3	KEY (MOTOR TO IMPELLER)	KEYBAR-SB-025-OVR	1
4	WATER SLINGER	SLINGER-SDWS99997	1
5	PUMP HEAD	HEAD-SDPH00017-A	1
6	HEAD GASKET (O-RING)	ORING-SDP000088	1
7	MECHANICAL SEAL 1 1/8"	MCHSEAL-SDPS00355	1
8	SHAFT SLEEVE	SHTSLVE-SDPC00302	1
9	"0" RING (SHAFT SLEEVE)	ORING-SDP000211	1
10	IMPELLER	IMP-SDP100027-A	1
11	IMPELLER WASHER	IMPWHR-SDPRW00350	1
12	CAPSCREW 1/2 x 1"	FTRCP-HS8-0050C-0100-2	1
13	WEARING RING	WRGRING-SDPWR0023	1
14	PUMP CASE	CASE-SDPC00028	1
15	SUCTION HOUSING GASKET	GASKET-SDPG03845	1
16	SUCTION HOUSING	FLG-ASA-SP15-0600	1
17	CAPSCREWS (SUCTION HOUSING TO CASE)	FTRCP-5HZ-0075C-0150-2	8
18	STUD	(HEAD TO CASE) 3/4 x 1 1/2" (HEAD TO CASE) 3/8 x 1 3/8"	4
19	HEX NUT	(HEAD TO CASE) FTRNUT-2HZ-0038C-2	4
20	CAPSCREWS	(HEAD TO CASE) FTRCP-5HZ-0038C-0100-2	4
21	CAPSCREWS (MOTOR TO HEAD)	FTRCP-5HZ-0050C-0100-2	4
22	1/4" 90° COMPRESSION FITTING	CPMFTG-R-MELL-025-025	1
23	1/4" PIPE PLUG	PF-PLGSQ-SLD-B-0025	1