

THREADED ELBOW

THREADED TEE

CONCENTRIC REDUCER
(IF NEEDED)

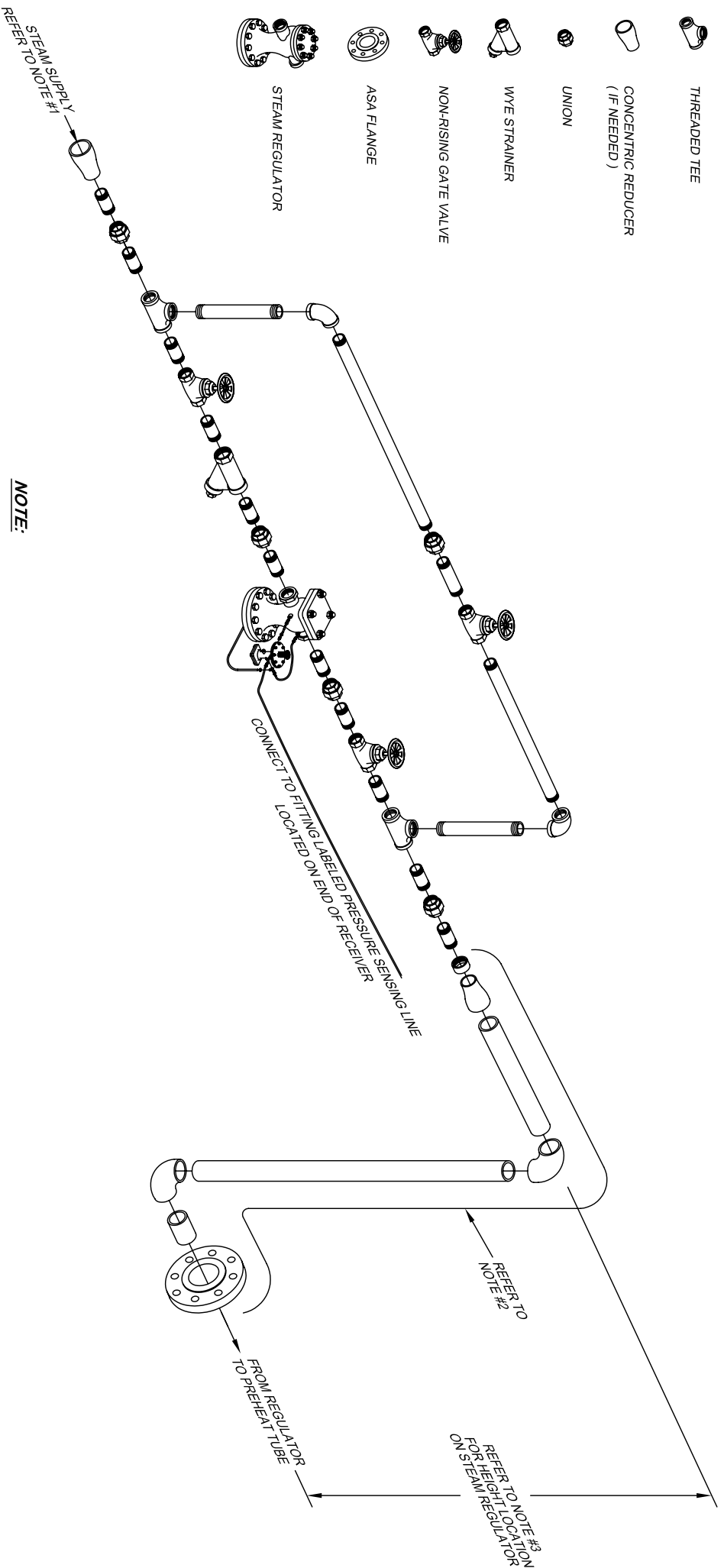
UNION

WYE STRAINER

NON-RISING GATE VALVE

ASA FLANGE

STEAM REGULATOR



NOTE:

1. STEAM SUPPLY LINE FEEDING REGULATOR TO BE SIZED USING PROPER PIPING INSTALLATION PRACTICE.
2. PIPING BETWEEN REGULATOR AND PREHEAT TUBE SHOULD BE INSULATED.
3. STEAM REGULATOR MUST BE POSITIONED ABOVE THE OVERFLOW, SO AS; NOT TO FLOOD AND DAMAGE THE STEAM REGULATING VALVE.
4. PLEASE READ THE INSTALLATION, OPERATION & MAINTENANCE MANUAL SUPPLIED IN THE SHIPCO I.O.M BEFORE PIPING OR STARTING THE UNIT.

SHIPCO®
PUMPS

MANUFACTURED BY

SHIPPENSBURG PUMP COMPANY INC.

P.O. Box 279 Shippenburg, Pa. 17257

PHONE 717 532-7321 / FAX 717 532-7704

WWW.SHIPCO.PUMPS.COM

SHIPCO® IS A REGISTERED TRADEMARK OF SHIPPENSBURG PUMP CO., INC.

Piping Diagram for
Pressurized Deaerator Units

DRAWN BY	DATE	REVISION
M. REED	12/05/05	0

PRINT # SHIPCO-ED5