

THREADED ELBOW

THREADED TEE

CONCENTRIC REDUCER  
(IF NEEDED)

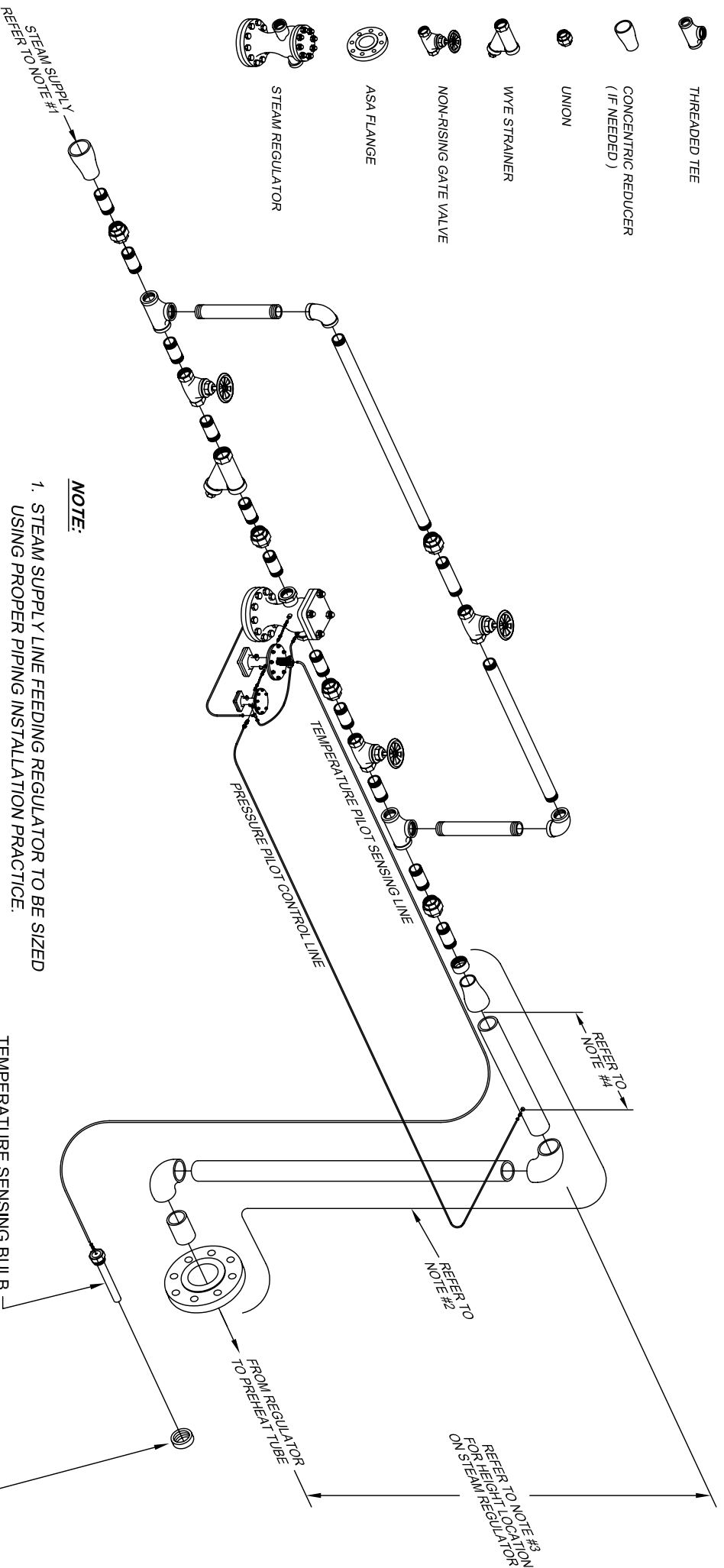
UNION

WYE STRAINER

NON-RISING GATE VALVE

ASA FLANGE

STEAM REGULATOR



**NOTE:**

1. STEAM SUPPLY LINE FEEDING REGULATOR TO BE SIZED USING PROPER PIPING INSTALLATION PRACTICE.
2. PIPING BETWEEN REGULATOR AND PREHEAT TUBE SHOULD BE INSULATED.
3. STEAM REGULATOR MUST BE POSITIONED ABOVE THE OVERFLOW, SO AS; NOT TO FLOOD AND DAMAGE THE STEAM REGULATING VALVE.
4. REFER TO SPENCE I.O.M., FIGURE #1 SECTION "B" FOR PROPER DISTANCE.
5. PLEASE READ THE INSTALLATION, OPERATION & MAINTENANCE MANUAL SUPPLIED IN THE SHIPCO I.O.M BEFORE PIPING OR STARTING THE UNIT.

**SHIPCO**  
**SPUMPS**

MANUFACTURED BY

SHIPPENSBURG PUMP COMPANY INC.

P.O. Box 337 Shippenburg, PA. 17257

PHONE 717 / 532-7321 / FAX 717 / 532-7704

**Piping Diagram for Boiler Feed Units**  
**With 20 PSIG & Greater Steam Available**

DRAWN BY	DATE	REVISION
M. REED	12/05/05	0
PRINT #	SHIPCO-ET14D	