

SHIPCO®
PUMPS

SHIPPENSBURG PUMP CO., INC.
P.O. BOX 279, SHIPPENSBURG, PA 17257
PHONE 717-532-7321 • FAX 717-532-7704
WWW.SHIPCOPUMPS.COM

PRIDE

QUALITY

CRAFTSMANSHIP

BULLETIN 165
Revised 2/10

FT Series

Glycol Fill Tank

Receivers Available

30 Gallon
50 Gallon
100 Gallon

- Centrifugal Pumps designed for many years of dependable service with low maintenance.
- 3500 RPM operation provides low inertia for intermittent operation.
- Heavy Wall Steel Receivers
- Pump has no internal bearings. (Motor bearings refer to motor manufacturer's instructions.)
- Gauge Glass Assembly for viewing water level.
- 2 Pump openings on all units.
- Low water cutoff Float Switch
- Removable Lid with handle



SHIPCO®
PUMPS are equipped with Mechanical Seals rated for temperatures up to 250°F as standard.
Higher temperature seals and special faces available upon request.

The Fill Tank (FT) unit comes standard with either a simplex or duplex bronze fitted Pump & Motor assembly and a 3/16" thick black steel receiver. Receivers are available in three popular sizes—30 gallon, 50 gallon and 100 gallon. All receivers have a gauge glass assembly, a low-water cutoff float switch and a removable lid with handle as standard.

The FT unit can be used as a Glycol fill tank or as an air break tank. Air break tank units provide a positive air gap fitting to eliminate back flow and possible contamination of water supply. The FT unit functions as an air break tank when the optional float switch and solenoid valve are supplied with an air gap fitting. Excellent for deaerators with no surge tanks, process loads, cooling towers or anywhere loss of water necessitates make-up because they provided a detached central make-up supply reservoir.

Selection for each pump is based on the maximum system make-up load plus a 25% minimum reserve. For example, a system with 20 GPM make-up would require a 25 GPM duplex pumping unit. The discharge pressure would be based on vertical lift plus any back pressure and pipe friction loss. The general tank size should be based on a two-minute make-up reserve.

The FT unit can be used as a seal flush unit when the optional float switch and solenoid valve are supplied with air gap fitting. As a complete seal flush pumping system it is used with larger municipal or industrial pumps to provide lubrication and flushing action of clean or cooling water for mechanical seals or stuffing boxes.

Many city codes prohibit the connecting of city water lines directly to sewage pumps, cooling towers, or pumps handling abrasive and/or corrosive materials.

In addition, maintenance costs are reduced and pump packing and shaft sleeves last longer because without these units the pressure in a pump forces grit and corrosives in the liquid being pumped back into the stuffing box, subjecting seals or packing to early wear and needed replacement.

As a seal flush unit, pumps should be selected with a minimum capacity of 2¹/₂ GPM for each stuffing box to be sealed. The discharge pressure should be based on adding 5 PSIG to shutoff pressure of the pump to be sealed plus any vertical lift from FT unit to the pump being flushed. Example: A pump with a shutoff pressure of 20 PSIG (46.20 ft.) plus a vertical lift of 5 PSIG (11.55 ft.) would require a pump rated at 30 PSIG.

OTHER ACCESSORIES ARE AVAILABLE INCLUDING:

1/2" solenoid valve and float switch assembly with an air gap in place of the removable lid

12" funnel for manual fill systems in lieu of the removable lid

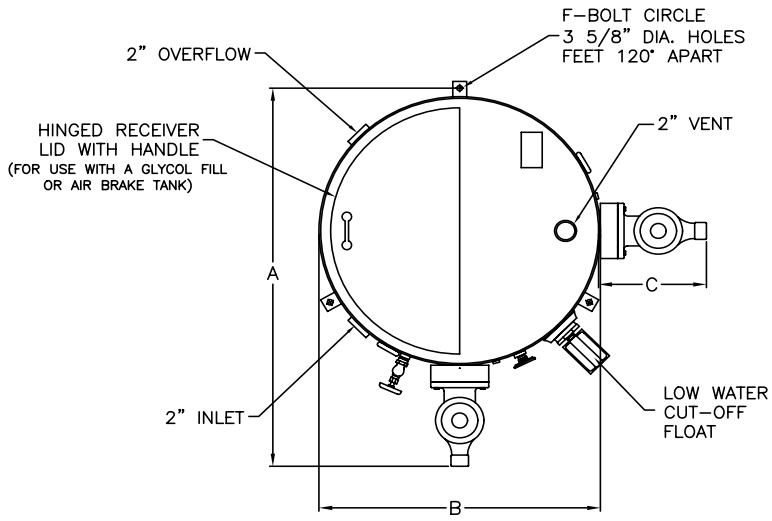
Dial thermometer

Suction isolation valves

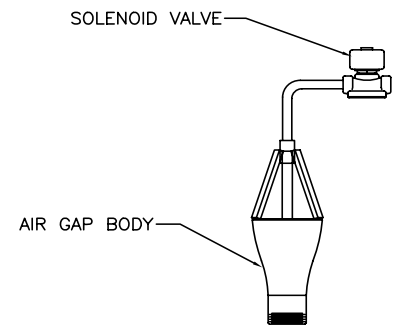
Discharge pressure gauge assembly

Electrical control panels available upon request

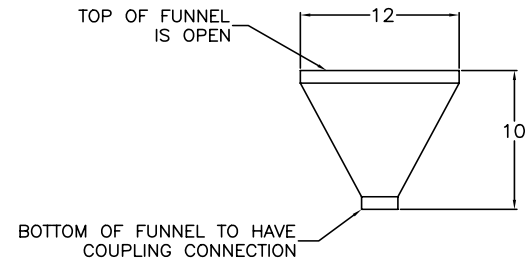
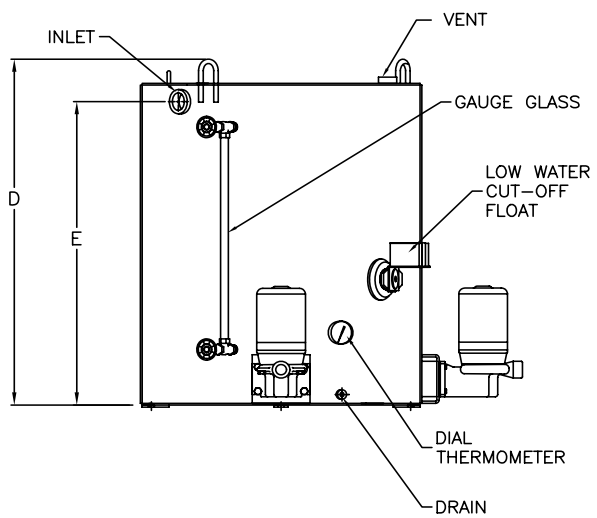
Tank material and thickness



RECEIVER NO.	30 GAL	50 GAL	100 GAL
TANK DIMENSIONS	18 7/8 x 24	18 7/8 x 36	30 x 36
A	32 1/2	32 1/2	43 1/2
B	19 1/2	19 1/2	30 1/2
C	13	13	13
D	25	37	37
E	22 1/2	34 3/4	34 3/4
F	20 7/8	20 7/8	32
INLET	2"	2"	2"
OVERFLOW	2"	2"	2"
VENT	2"	2"	2"
NET STORAGE GAL.	20	33	66

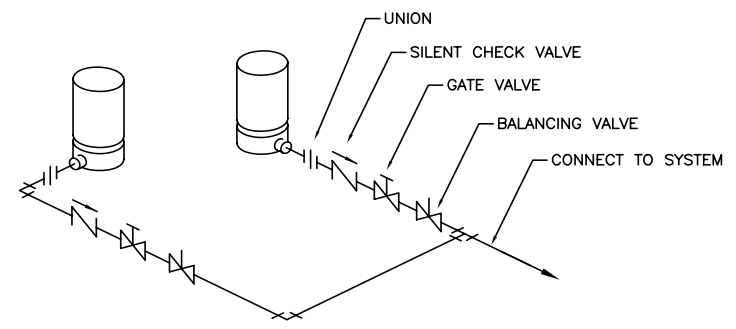


(OPTIONAL) AIR GAP ASSEMBLY
USED WITH FLOAT SWITCH & SOLENOID VALVE



(OPTIONAL) FUNNEL
USED WITH MANUAL FILL SYSTEMS
IN PLACE OF HINGED LID

TYPICAL PIPING DIAGRAM



Type FT Units

Description	Single	Duplex
3/16" Thick Black steel receiver	1	1
Bronze Fitted Pump & Motor Assy.	1	2
Gauge Glass	1	1
Low water cut-off	1	1
Removable lid with handle	1	1

Model	# of Pumps	GPM	PSIG	HP	Phase	WT.
30 FT- 20-1-1	Single	12	20	1/3	1	180
30 FT- 20-1-3	Single	12	20	1/3	3	180
30 FT- 20-2-1	Duplex	12	20	1/3	1	240
30 FT- 20-2-3	Duplex	12	20	1/3	3	240
30 FT- 40-1-1	Single	12	40	1-1/2	1	220
30 FT- 40-1-3	Single	12	40	1-1/2	3	220
30 FT- 40-2-1	Duplex	12	40	1-1/2	1	320
30 FT- 40-2-3	Duplex	12	40	1-1/2	3	320
30 FT- 60-1-3	Single	12	60	2	3	250
30 FT- 60-2-3	Duplex	12	60	2	3	350
30 FT- 80-1-3	Single	12	80	3	3	350
30 FT- 80-2-3	Duplex	12	80	3	3	450
30 FT-100-1-3	Single	12	100	5	3	400
30 FT-100-2-3	Duplex	12	100	5	3	500
50 FT- 20-1-1	Single	12	20	1/3	1	190
50 FT- 20-1-3	Single	12	20	1/3	3	190
50 FT- 20-2-1	Duplex	12	20	1/3	1	250
50 FT- 20-2-3	Duplex	12	20	1/3	3	250
50 FT- 40-1-1	Single	12	40	1-1/2	1	230
50 FT- 40-1-3	Single	12	40	1-1/2	3	230
50 FT- 40-2-1	Duplex	12	40	1-1/2	1	330
50 FT- 40-2-3	Duplex	12	40	1-1/2	3	330
50 FT- 60-1-3	Single	12	60	2	3	260
50 FT- 60-2-3	Duplex	12	60	2	3	360
50 FT- 80-1-3	Single	12	80	3	3	360
50 FT- 80-2-3	Duplex	12	80	3	3	460
50 FT-100-1-3	Single	12	100	5	3	410
50 FT-100-2-3	Duplex	12	100	5	3	510
100 FT- 20-1-1	Single	12	20	1/3	1	290
100 FT- 20-1-3	Single	12	20	1/3	3	290
100 FT- 20-2-1	Duplex	12	20	1/3	1	350
100 FT- 20-2-3	Duplex	12	20	1/3	3	350
100 FT- 40-1-1	Single	12	40	1-1/2	1	350
100 FT- 40-1-3	Single	12	40	1-1/2	3	350
100 FT- 40-2-1	Duplex	12	40	1-1/2	1	415
100 FT- 40-2-3	Duplex	12	40	1-1/2	3	415
100 FT- 60-1-3	Single	12	60	2	3	380
100 FT- 60-2-3	Duplex	12	60	2	3	445
100 FT- 80-1-3	Single	12	80	3	3	480
100 FT- 80-2-3	Duplex	12	80	3	3	545
100 FT-100-1-3	Single	12	100	5	3	530
100 FT-100-2-3	Duplex	12	100	5	3	595