



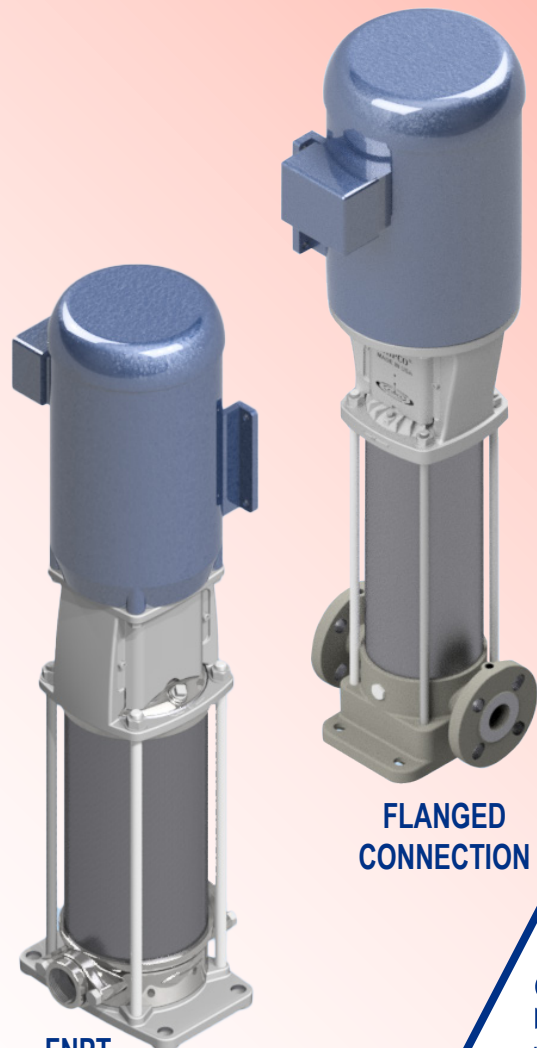
SHIPPENSBURG PUMP CO. INC.  
P.O. BOX 279, SHIPPENSBURG, PA 17257  
PH 717-532-7321 • FAX 717-532-7704  
WWW.SHIPCOPUMPS.COM

**Pride**

**Quality**

**Craftsmanship**

BULLETIN 191



**FNPT  
CONNECTION**

**FLANGED  
CONNECTION**

**MODEL QM  
MULTI-STAGE PUMP**

**700 SERIES SINTERED  
17-4 STAINLESS STEEL IMPELLERS**

**SHIPCO<sup>®</sup>**  
**PUMPS** equipped with Mechanical Seals rated up to a standard 250°F.  
*Higher temperature seals and special faces available upon request.*  
**Charted units are a representation of the typical systems and sizes used.**  
*Higher pump pressures and larger pump capacities are available.*

The QM Pump Series is a family of radially split vertical inline suction pumps tailored for harsh environments. They are the first in class to use sintered stainless 17-4PH impellers and diffusers, which strikes a perfect balance between the robust nature of integrally cast components, and the efficiency of light weight welded sheet metal components. Designed with service and longevity in mind, the mechanical seals are top accessible, allowing replacement without a pump tear down. With robust impellers and diffusers, the simplicity of replacing wear rings, bushings, and mechanical seals; the maintenance and upkeep cost of SHIPCO®'s Model QM Pump is significantly less than similar pumps with disposable stack kits.

The seal cover plate has integral cooling fins with a fan built into the motor coupler to convectively cool the mechanical seal, maximizing service life.

An axial flow (propeller) inducer stage cuts NPSHr without sacrificing flow stability or efficiency.

Industry standard pump base, suction, and discharge dimensions allow interchangeability between SHIPCO®'s Model QM Pump and other major brands.

SHIPCO®'s Model QM Pump is designed around NEMA standard C and TC motor frames. The motors are interchangeable and readily available from all major manufacturers, enclosures, and power services.

No pump should be run dry, backward, or deadhead. However, the carbon graphite bushings and wear rings are softer with lower friction than conventional metal wear components, making the pump more forgiving toward common commissioning errors.

High efficiency and easy maintenance design meets industrial strength in SHIPCO®'s Model QM Pump!

Running surfaces are machined to exacting tolerances. Specifically engineered to extend wear life and prevent galling at high speeds, with better chemical resistance than 304 in most environments.

- Industry standard hookup dimensions allow you to upgrade your existing pumps.
- Industry standard motors reduce downtime by improving availability and affordability.
- Mechanical seals can be serviced without moving the pump or motor.
- Mechanical Seal and O-Ring materials are customizable to meet application requirements.
- Integral Bleed-Off Valve makes priming quick and easy.
- Optional inducer stage cuts NPSHr.
- Balanced Impellers reduce thrust loads to increase motor bearing life.
- SHIPCO®'s Fan Cooled Seal Cavity uses forced air to extend the Mechanical Seal life.
- Stainless wetted components and aluminum outer brackets are ideal for food grade.