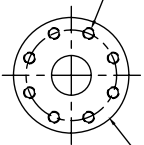
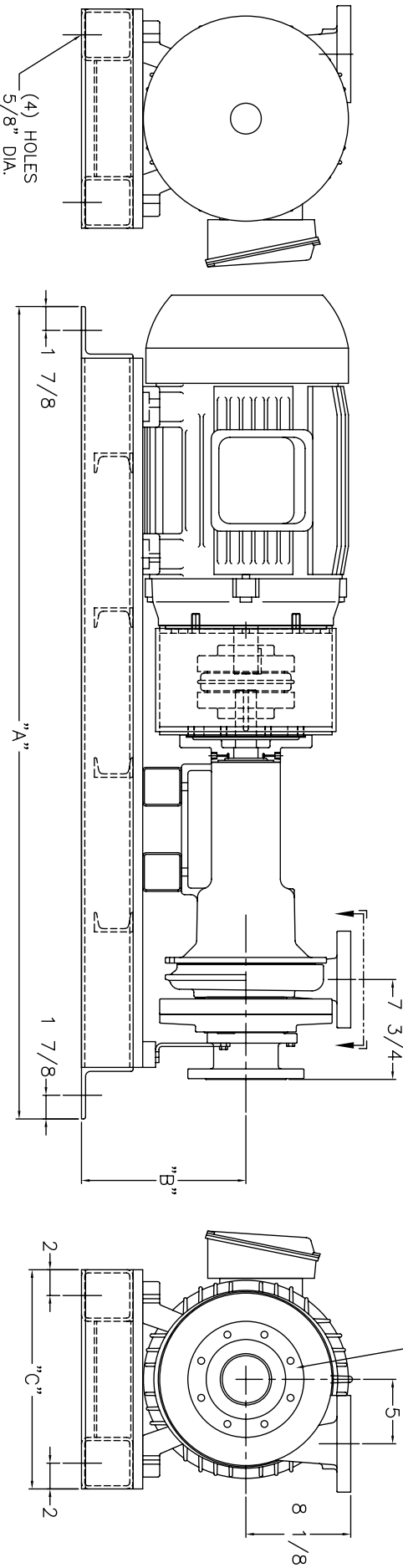


(8) 3/4-10 UNC TAPPED HOLES ON 5 7/8" B.C.
 DISCHARGE FLANGE MATES TO 2 1/2" 300# FLANGE



END SUCTION MATES TO 4" 150# FLANGE



MOTOR SIZE	"A"	"B"	"C"
20 HP TC FRAME ODP.	57"	11 3/4"	17"
20 HP TC FRAME TEFC.	59"	11 3/4"	17"
25 HP TC FRAME ODP.	59"	11 3/4"	17"
25 HP TC FRAME TEFC.	59"	11 3/4"	17"
30 HP TC FRAME ODP.	59"	11 3/4"	17"
30 HP TC FRAME TEFC.	59"	11 3/4"	17"
40 HP TC FRAME ODP.	63"	11 3/4"	17"
40 HP TC FRAME TEFC.	63"	11 3/4"	17"
50 HP TC FRAME ODP.	63"	12 3/4"	17"
50 HP TC FRAME TEFC.	63"	12 3/4"	17"
60 HP TC FRAME ODP.	67"	13 3/4"	17"
60 HP TC FRAME TEFC.	67"	13 3/4"	17"
75 HP TC FRAME ODP.	67"	13 3/4"	17"
75 HP TC FRAME TEFC.	67"	13 3/4"	17"
100 HP TC FRAME ODP.	70"	14 3/4"	23"
100 HP TC FRAME TEFC.	70"	14 3/4"	23"
125 HP TC FRAME ODP.	77"	15 3/4"	23"
125 HP TC FRAME TEFC.	77"	15 3/4"	23"

ALL DIMENSIONS APPROXIMATE

MODEL 229 AWF
HORIZONTAL END SUCTION

DRAWN BY	DATE	REVISION
S.A.D.	1/05	.0



MANUFACTURED BY

SHIPPENSBURG PUMP COMPANY INC.

P.O. Box 279 Shippensburg, Pa. 17257

PHONE 717 532-7321 / FAX 717 532-7704

WWW.SHIPCOPIUMPS.COM

SHIPCO® IS A REGISTERED TRADEMARK OF SHIPPENSBURG PUMP CO., INC.