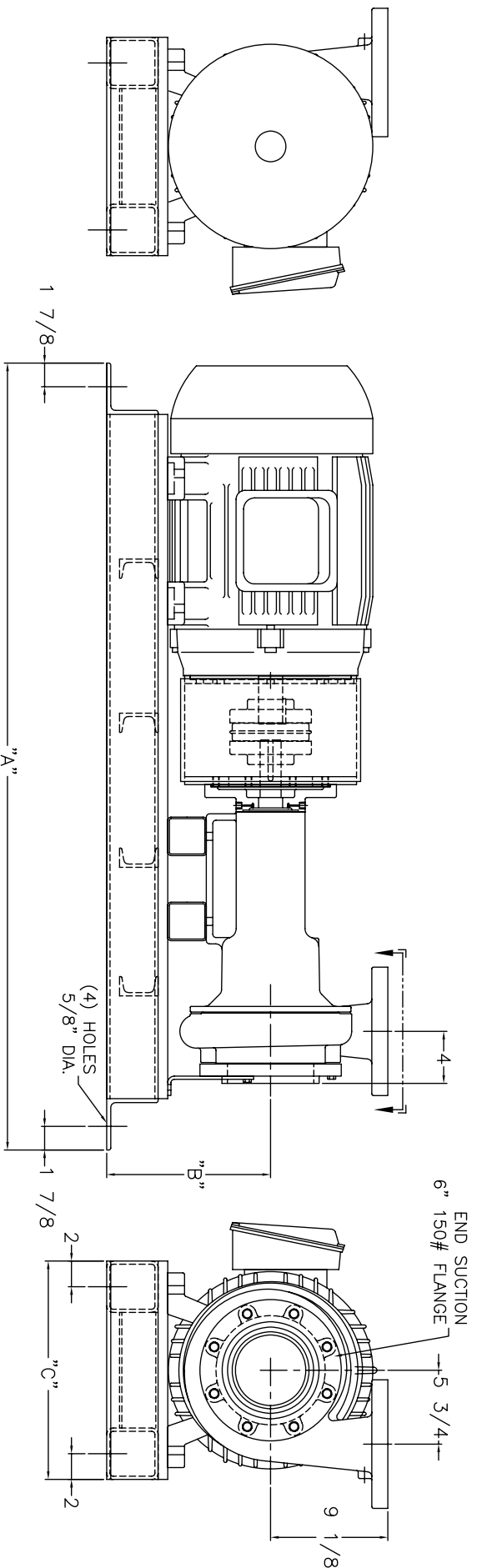
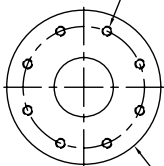


(8) 3/4-10 UNC TAPPED HOLES ON 7 7/8" B.C.
DISCHARGE FLANGE MATES TO 4" 300# FLANGE



MOTOR SIZE	"A"	"B"	"C"
20 HP TC FRAME ODP	56"	11 3/4"	17"
20 HP TC FRAME TEFC	57 1/2"	11 3/4"	17"
25 HP TC FRAME ODP	57 1/2"	11 3/4"	17"
25 HP TC FRAME TEFC	57 3/4"	11 3/4"	17"
30 HP TSC FRAME ODP	57 3/4"	11 3/4"	17"
30 HP TSC FRAME TEFC	59 1/4"	11 3/4"	17"
40 HP TSC FRAME ODP	59 1/4"	12 3/4"	17"
40 HP TSC FRAME TEFC	61 1/4"	12 3/4"	17"
50 HP TSC FRAME ODP	61 1/4"	12 3/4"	17"
50 HP TSC FRAME TEFC	62 3/4"	12 3/4"	17"
60 HP TSC FRAME ODP	62 3/4"	13 3/4"	17"
60 HP TSC FRAME TEFC	64 3/4"	13 3/4"	18"

SHIPCO®
PUMPS
MANUFACTURED BY
SHIPPENSBURG PUMP COMPANY INC.
P.O. Box 279 Shippensburg, Pa. 17257
PHONE 717 532-7321 / FAX 717 532-7704
WWW.SHIPCOPIUMPS.COM

SHIPCO® IS A REGISTERED TRADEMARK OF SHIPPENSBURG PUMP CO., INC.

MODEL 131 AWF
HORIZONTAL END SUCTION

DRAWN BY	DATE	REVISION
M.E.R.	3/05	.1

ALL DIMENSIONS APPROXIMATE