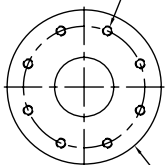
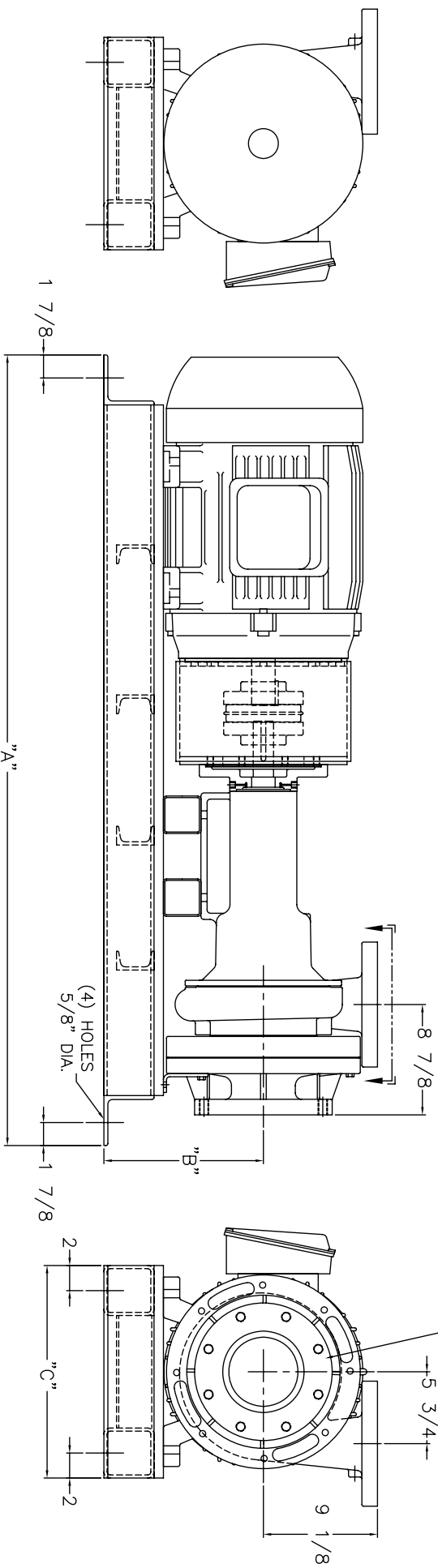


(8) 3/4-10 UNC TAPPED HOLES ON 7 7/8" B.C.
DISCHARGE FLANGE MATES TO 4" 300# FLANGE



END SUCTION MATES TO 6" 150# FLANGE



MOTOR SIZE	"A"	"B"	"C"
40 HP TSC FRAME ODP.	61 1/4"	12 3/4"	17"
40 HP TSC FRAME TEFC.	63 1/4"	12 3/4"	17"
50 HP TSC FRAME ODP.	63 1/4"	12 3/4"	17"
50 HP TSC FRAME TEFC.	64 3/4"	12 3/4"	17"
60 HP TSC FRAME ODP.	64 3/4"	12 3/4"	17"
60 HP TSC FRAME TEFC.	66 3/4"	13 3/4"	18"
75 HP TSC FRAME ODP.	66 3/4"	13 3/4"	18"
75 HP TSC FRAME TEFC.	66 3/4"	13 3/4"	18"
100 HP TSC FRAME ODP.	69 3/4"	14 5/8"	22"
100 HP TSC FRAME TEFC.	69 3/4"	14 5/8"	22"
125 HP TSC FRAME ODP.	76"	15 3/4"	25"

ALL DIMENSIONS APPROXIMATE

SHIPCO®
SPUMPS

MANUFACTURED BY
SHIPPENSBURG PUMP COMPANY INC.
P.O. Box 279 Shippensburg, Pa. 17257
PHONE 717 532-7321 / FAX 717 532-7704
WWW.SHIPCOPIUMPS.COM

SHIPCO® IS A REGISTERED TRADEMARK OF SHIPPENSBURG PUMP CO., INC.

MODEL 231 AWF
HORIZONTAL END SUCTION

DRAWN BY: M.E.R. DATE: 3/05 REVISION: .1

Section AWF Page 2800