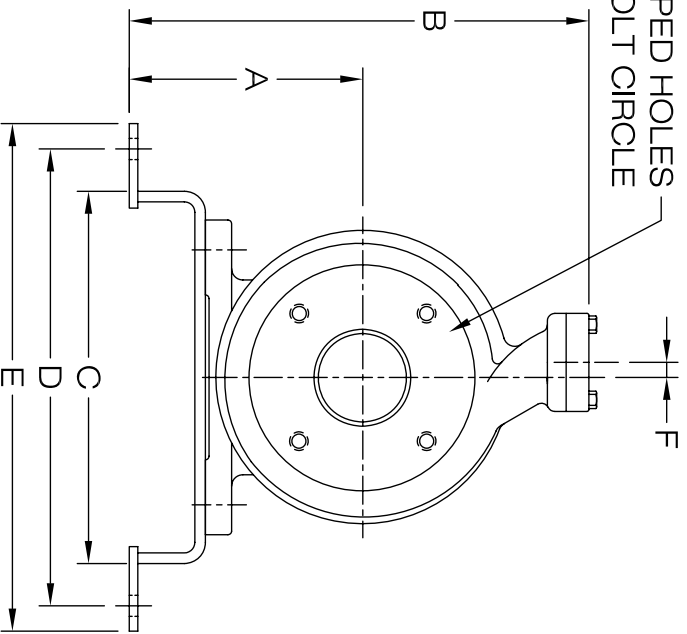
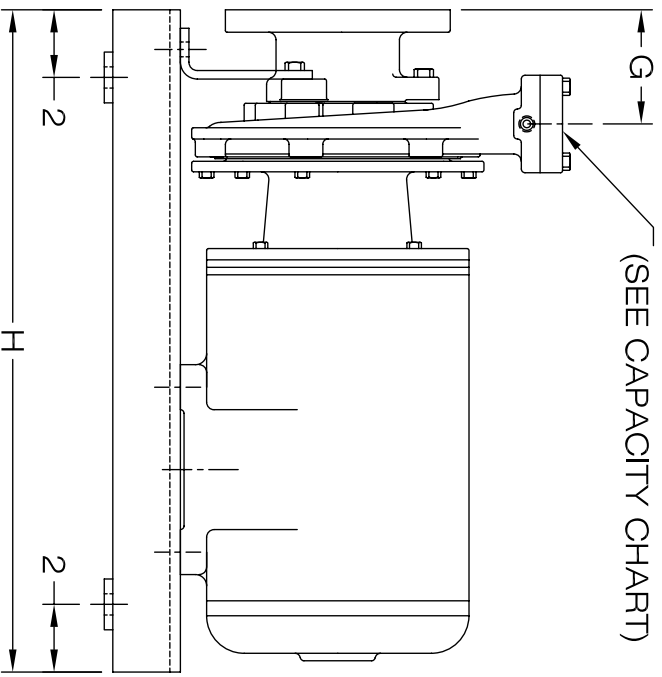


SUCTION - 3"
 (4) 5/8-11 TAPPED HOLES
 ON A 6" DIA. BOLT CIRCLE



DISCHARGE
 (SEE CAPACITY CHART)



PUMP MDL.	117	121	121	121
MOTOR	56J	143JM - 145JM	182JM - 184JM	213JM
FRAME	143JM - 145JM	143JM - 145JM	182JM - 184JM	213JM
A	7 1/2"	7 1/2"	7 1/2"	7 1/2"
B	15"	15"	15"	15"
C	10"	10"	11"	12"
D	12 1/2"	12 1/2"	13 1/2"	14 1/2"
E	14"	14"	15"	16"
F	1/2"	1/2"	1/2"	1/2"
G	4"	4"	4"	4"
H	21"	21"	22"	24"

DISCHARGE CAPACITY	G.P.M.	SIZE
0-15	3/4"	
16-60	1 1/2"	
61-113	2"	
114-150	2 1/2"	
151-250	3"	
251-400	4"	

SHIPCO®
SPUMPS

MANUFACTURED BY
 SHIPPENSBURG PUMP COMPANY INC.
 P.O. Box 279 Shippensburg, Pa. 17257
 PHONE 717 532-7321 / FAX 717 532-7704
 WWW.SHIPCO-PUMPS.COM
 SHIPCO® IS A REGISTERED TRADEMARK OF SHIPPENSBURG PUMP CO., INC.

Model D
 Horizontal Close Coupled
 w/ Base Plate

DRAWN BY	DATE	REVISION
M.E.R.	3/08	.0
DIMENSION PRINT		
Section D Page 1520		