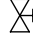

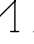
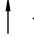
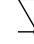

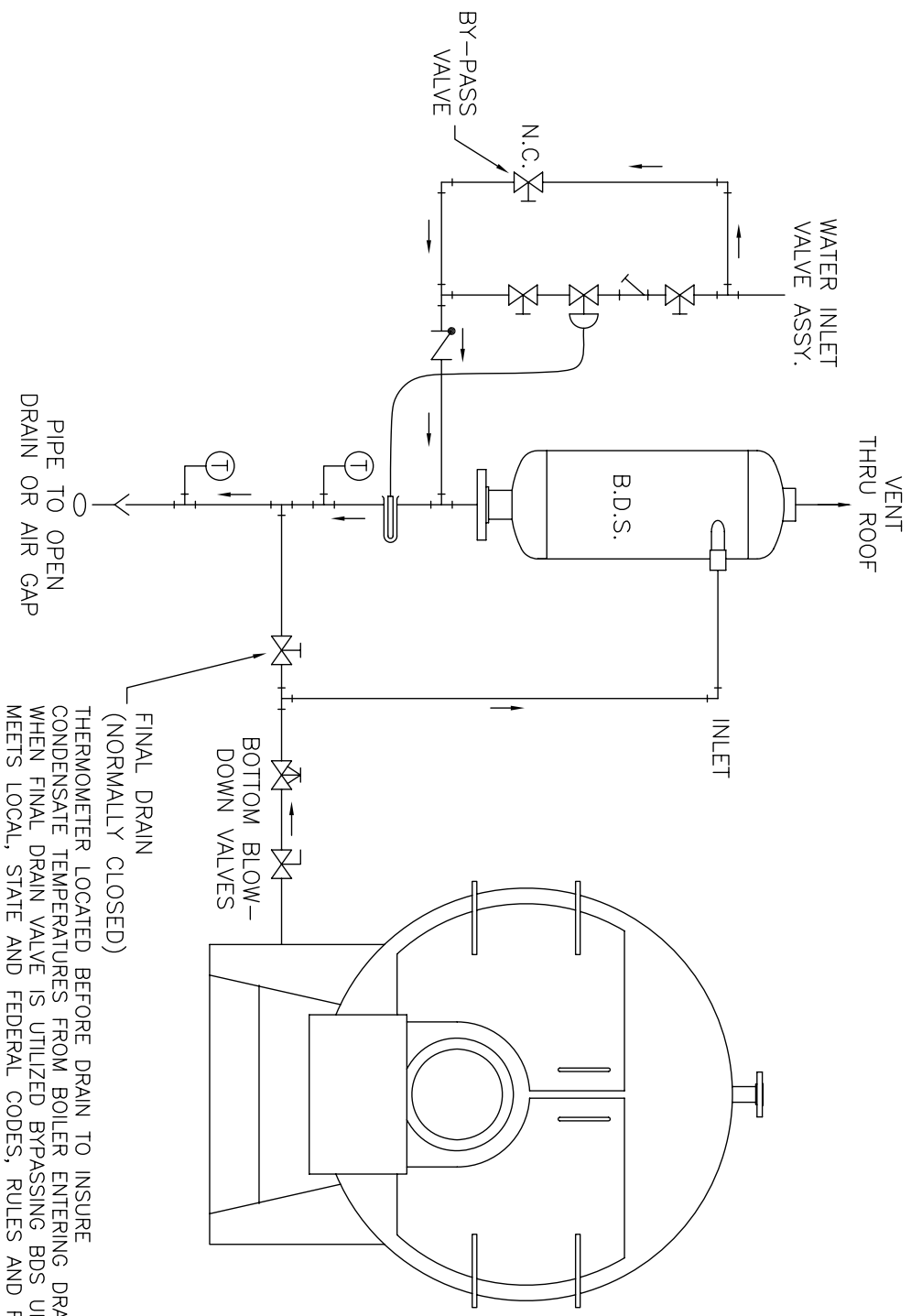


- LEGEND**
-  GATE VALVE
  -  TEMPERATURE REGULATOR
  -  "Y" STRAINER
  -  CHECK VALVE
  -  TEMPERATURE SENSING BULB
  -  THERMOMETER



FINAL DRAIN (NORMALLY CLOSED)  
 THERMOMETER LOCATED BEFORE DRAIN TO INSURE  
 CONDENSATE TEMPERATURES FROM BOILER ENTERING DRAIN  
 WHEN FINAL DRAIN VALVE IS UTILIZED BYPASSING BDS UNIT  
 MEETS LOCAL, STATE AND FEDERAL CODES, RULES AND REGULATIONS.

**NOTES:**

- INSTALL FULL SIZE (MINIMUM SIZE) VENT TO ATMOSPHERE.
- INSTALL FULL SIZE (MINIMUM SIZE) OVERFLOW TO AIR-GAP OR OPEN DRAIN.
- VENT PIPING DETAIL MUST BE DESIGNED AND INSTALLED BY A PROFESSIONAL LICENSED & REGISTERED AS REQUIRED FAMILIAR WITH EQUIPMENT AND ITS INTENDED USE TO MEET ALL LOCAL, STATE AND FEDERAL CODES RULES AND REGULATIONS.
- MUNICIPAL CODES MUST BE FOLLOWED: LOCAL, STATE AND FEDERAL PLUMBING CODES NORMALLY REQUIRE ANTI-SIPHON PROVISIONS – AIR GAPS, BACK-FLOW PREVENTERS, AND/OR VACUUM BREAKERS ARE COMMON REQUIREMENTS.
- CONSULT THE JURISDICTIONAL CODE OFFICER WHERE YOU ARE INSTALLING FOR CODE REQUIREMENTS.

**SHIPCO®**  
 MANUFACTURED BY  
**SHIPCO PUMPS**

SHIPPENSBURG PUMP COMPANY INC.  
 P.O. Box 279 Shippensburg, Pa. 17257  
 PHONE 717 532-7321 / FAX 717 532-7704  
 WWW.SHIPCO PUMPS.COM

SHIPCO® IS A REGISTERED TRADEMARK OF SHIPPENSBURG PUMP CO., INC.

<b>Typical Piping Diagram</b>		
<b>for BDS(Blowdown Separator) Unit</b>		
DRAWN BY S.A.D.	DATE 4/09	REVISION .1
Piping Diagram <b>30038</b>		
<b>Section MSC Page 0600</b>		