

SHIPCO PUMPS

MANUFACTURED BY

SHIPPENSBURG PUMP COMPANY INC.

P.O. Box 279 Shippenburg, Pa. 17257

PHONE 717 532-7321 / FAX 717 532-7704

WWW.SHIPCO PUMPS.COM

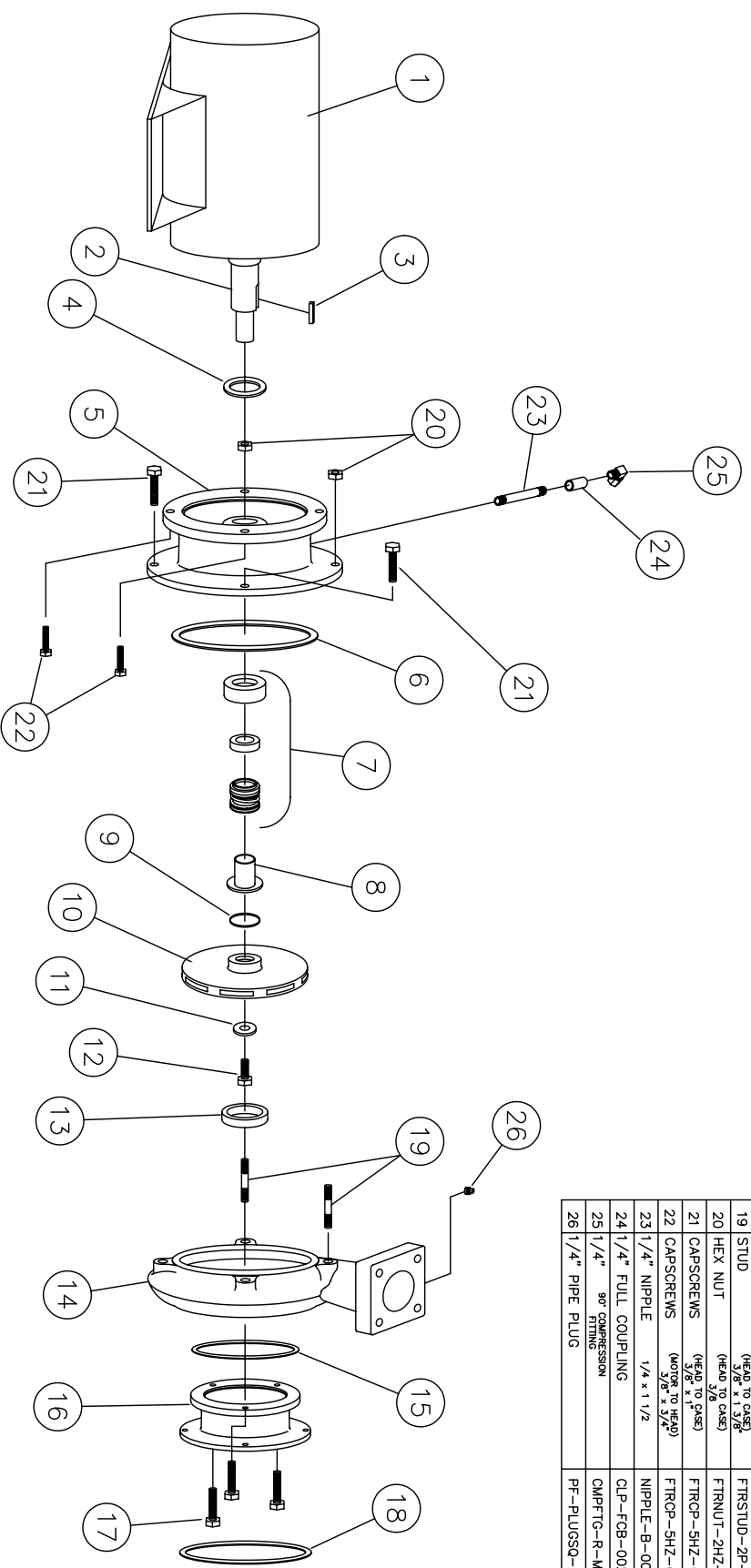
SHIPCO® IS A REGISTERED TRADEMARK OF SHIPPENSBURG PUMP CO., INC.

114 Model D Horiz End Suction JM Frame's 143, 145, 182, & 184 130 GPM & Less

DRAWN BY J.BROOKENS DATE 9/04 REVISION .5

PARTS LIST # PL-81409

QUBE PART # 114DHJM-S



PARTS LIST			
NO.	DESCRIPTION	PART NO.	QTY.
1	MOTOR	JM FRAME	1
2	MOTOR SHAFT	KEYBAR-58-019-OVR	1
3	KEY (MOTOR TO IMPELLER)	SLINGER-SDWS99998	1
4	WATER SLINGER	HEAD-SDPH00133	1
5	PUMP HEAD	GASKET-SDP03826	1
6	HEAD GASKET	MCHSEAL-SDPS00155	1
7	MECHANICAL SEAL 1 1/8"	SHTSLVE-SDPC00218	1
8	SHAFT SLEEVE	ORING-SDPC00051	1
9	"O" RING (SHAFT SLEEVE)	IMP-SDPI00147-A	1
10	IMPELLER	IMPWRH-SDPRW00237	1
11	IMPELLER WASHER	FTRGCP-HSB-0038C-0100-2	1
12	CAPSCREW 3/8" x 1"	WRGRING-SDPW0068	1
13	WEARING RING	CASE-SDPC00148-A	1
14	PUMP CASE	GASKET-SDP03828	1
15	SUCTION HOUSING GASKET	SUCHSG-SDPF00050-C	1
16	SUCTION HOUSING	FTRGCP-5HZ-0038C-0125-2	3
17	CAPSCREWS (SUCTION HOUSING TO CASE)	FLG-ASA-SP15-GKT-0300	1
18	SUCTION GASKET	FTRSTUD-2P-0038C-0138-2	2
19	STUD	FTRNUIT-2HZ-0038C-2	2
20	HEX NUT	FTRGCP-5HZ-0038C-0100-2	2
21	CAPSCREWS (HEAD TO CASE)	FTRGCP-5HZ-0038C-0075-2	4
22	CAPSCREWS (MOTOR TO IMPELLER)	NIPPLE-B-0025x150	1
23	1/4" NIPPLE	CLP-FCB-0025	1
24	1/4" FULL COUPLING	CMFPTG-R-MELL-025-025	1
25	1/4" 90° COMPRESSION FITTING	PF-PLUGSQ-SLD-B-0025	1
26	1/4" PIPE PLUG		1