

# SHIPCO<sup>®</sup> SPUMPS

MANUFACTURED BY

SHIPPENSBURG PUMP COMPANY INC.

P.O. Box 279 Shippenburg, Pa. 17257

PHONE 717 532-7321 / FAX 717 532-7704

WWW.SHIPCO PUMPS.COM

SHIPCO<sup>®</sup> IS A REGISTERED TRADEMARK OF SHIPPENSBURG PUMP CO., INC.

416 AWF Horizontal

182, 184, 213 & 215 TC Frame

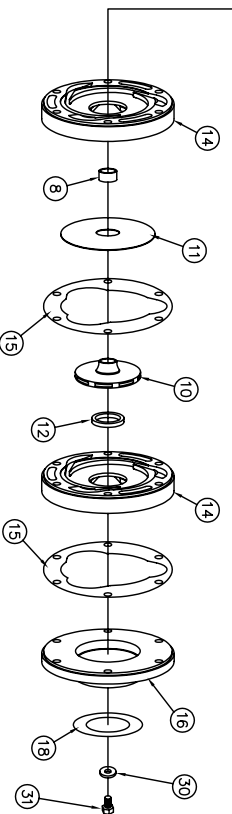
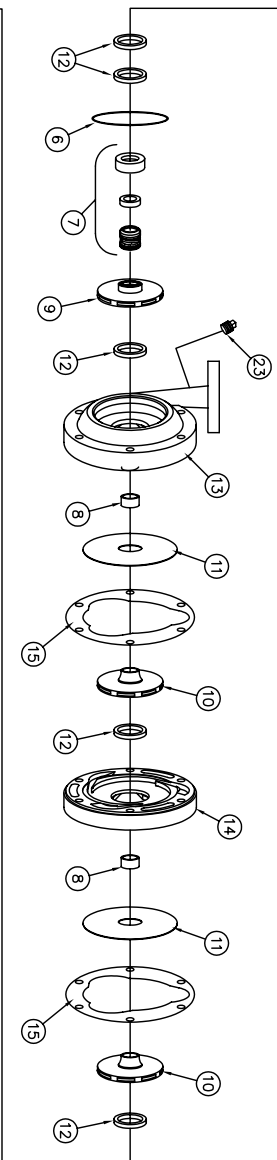
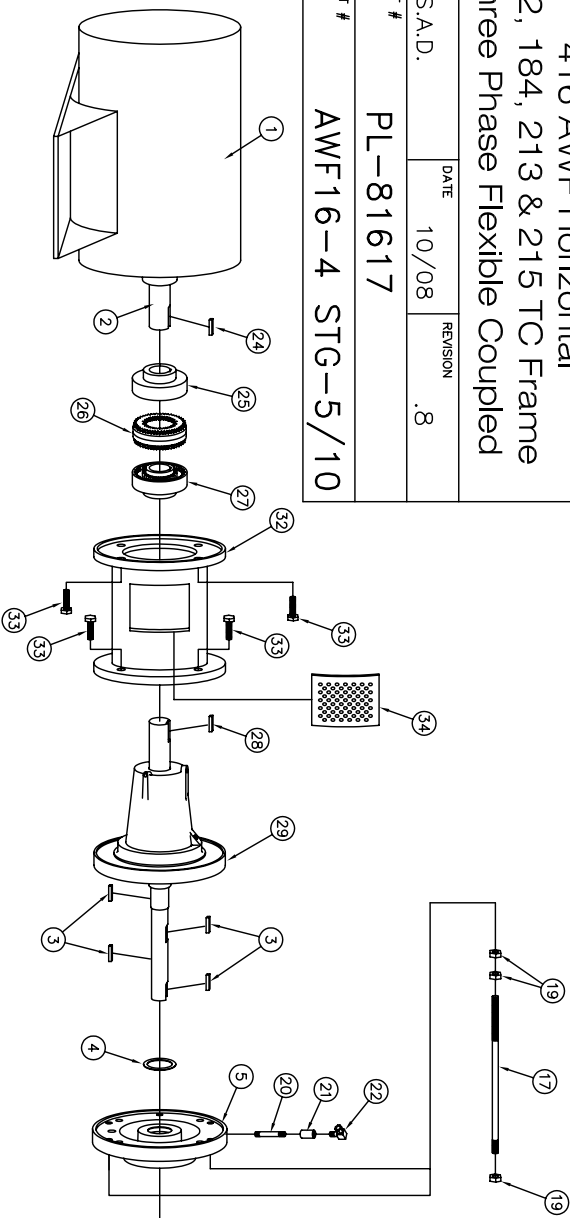
Three Phase Flexible Coupled

DRAWN BY S.A.D. DATE 10/08 REVISION .8

PARTS LIST #

PL-81617

AWF16-4 STG-5/10



PARTS LIST			
NO.	DESCRIPTION	PART NO.	QTY.
1	MOTOR / BEARING HOUSING	TC/JM FRAME	1
2	MOTOR SHAFT	KEYBAR-S8-013-OVR	1
3	KEY (IMPELLER)	SLINGER-SDW99996	4
4	WATER SLINGER	HEAD-SDPH00581	1
5	PUMP HEAD	ORING-SDP000674	1
6	HEAD GASKET (O-RING)	MCHSEAL-SDPS00155-SV	1
7	MECHANICAL SEAL 1 1/8"	SPACER-SDPS00579	3
8	SPACER SLEEVE	IMP-SDPI00042-1-4 7/8	1
9	IMPELLER (4th STAGE)	IMP-SDPI00042-1-A-4 7/8	3
10	IMPELLER (1st thru 3rd STAGE)	DIVPLT-SDPP00585	3
11	DIVIDER PLATE	WRGRING-SDPWR0032	6
12	WEARING RING	CASE-SDPC00577	1
13	PUMP VOLUTE CASE	PASSAGE-SDPP00576	3
14	PASSAGE	SUCHSG-SDPFC0582	4
15	SUCTION HOUSING GASKET	GASKET-SDPC03886	1
16	SUCTION HOUSING	CLAMPINGBOLT-SDPB00595-B	6
17	CLAMPING BOLT	FLG-ASA-SP15-CKT-0250	1
18	SUCTION GASKET	FTRNUT-SHZ-0050C-2	18
19	HEX NUT (GRADE RETAINING NUT)	NIPPLE-B-0025X250	1
20	1/4" NIPPLE 1/4 x 2 1/2	CLP-FCB-0025	1
21	1/4" FULL COUPLING	CPMFTG-R-MELL-038-025	1
22	1/4" 90° COMPRESSION FITTING	PF-PLUGSQ-SLD-B-0025	1
23	1/4" PIPE PLUG	PER MOTOR ORDERED	1
24	KEY (MOTOR SIDE)	PER MOTOR ORDERED	1
25	WOODS COUPLING (MOTOR)	PER MOTOR ORDERED	1
26	SURE-FLEX SLEEVE	PER MOTOR ORDERED	1
27	WOODS COUPLING (PUMP SIDE)	PER MOTOR ORDERED	1
28	KEY (PUMP SIDE)	KEYBAR-S8-025-OVR	1
29	BEARING ASSEMBLY	BRHSG-SDPBH00686	1
30	IMPELLER WASHER	IMPWHR-SDPRW00671	1
31	IMPELLER BOLT	-	1
32	ADAPTOR ASSEMBLY	BRHSG-SDPH00587	1
33	MOUNTING BOLT	-	8
34	COUPLING GUARD SCREEN	BRHSG-GUARDSCREEN-53333331	1