

SHIPCO PUMPS

MANUFACTURED BY

SHIPPENSBURG PUMP COMPANY INC.

P.O. Box 279 Shippensburg, Pa. 17257

PHONE 717 532-7321 / FAX 717 532-7704

WWW.SHIPCO PUMPS.COM

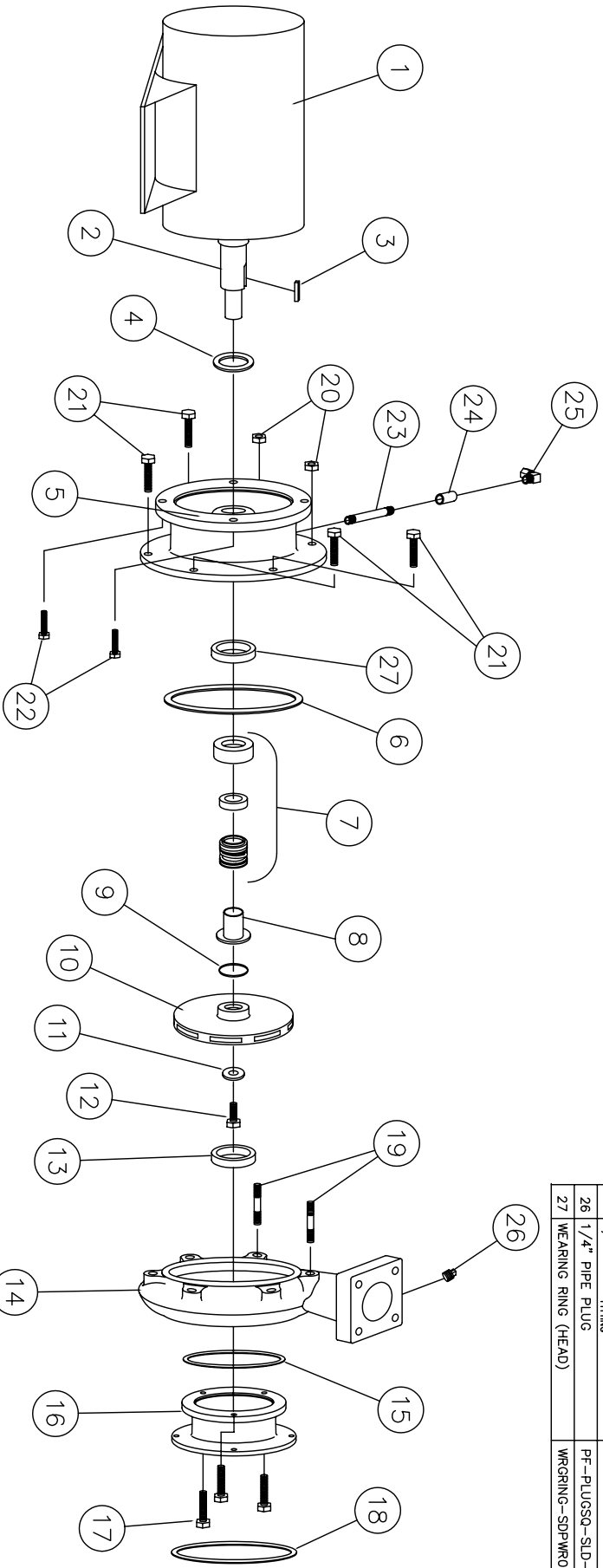
SHIPCO® IS A REGISTERED TRADEMARK OF SHIPPENSBURG PUMP CO., INC.

121 Model D Horiz End Suction JM Frames 213 & 215 3500 RPM

DRAWN BY J.BROOKENS DATE 9/04 REVISION .1

PARTS LIST # PL-82114

QUBE PART # 121DHJM(35)L



| PARTS LIST | | | |
|------------|-------------------------------------|-------------------------|------|
| NO. | DESCRIPTION | PART NO. | QTY. |
| 1 | MOTOR | JM FRAME | 1 |
| 2 | MOTOR SHAFT | | 1 |
| 3 | KEY (MOTOR TO IMPELLER) | KEYBAR-S8-019-OVR | 1 |
| 4 | WATER SLINGER | SLINGER-SDWS99998 | 1 |
| 5 | PUMP HEAD | HEAD-SDPH00060-1-A | 1 |
| 6 | HEAD GASKET (O-RING) | ORING-SDP000089 | 1 |
| 7 | MECHANICAL SEAL 1 1/8" | MCHSEAL-SDP500155 | 1 |
| 8 | SHAFT SLEEVE | SHTSLVE-SDPC00218 | 1 |
| 9 | "O" RING (SHAFT SLEEVE) | ORING-SDP000051 | 1 |
| 10 | IMPELLER | IMP-SDP000600 | 1 |
| 11 | IMPELLER WASHER | IMPWHR-SDPRW00237 | 1 |
| 12 | CAPSCREW | FTRCP-HS8-0038C-0100-2 | 1 |
| 13 | WEARING RING (CASE) | WRGRING-SDPWR0190 | 1 |
| 14 | PUMP CASE | CASE-SDPC00057-B | 1 |
| 15 | SUCTION HOUSING GASKET | GASKET-SDPG03829 | 1 |
| 16 | SUCTION HOUSING | SUCHSG-SDPF00050-B | 1 |
| 17 | CAPSCREWS (suction housing to case) | FTRCP-5HZ-0038C-0125-2 | 3 |
| 18 | SUCTION GASKET | GASKET-SDPG03848 | 1 |
| 19 | STUD (HEAD TO CASE) | FTRNUT-5HZ-0038C-0138-2 | 2 |
| 20 | HEX NUT (HEAD TO CASE) | FTRCP-5HZ-0038C-0100-2 | 4 |
| 21 | CAPSCREWS (HEAD TO CASE) | FTRCP-5HZ-0038C-0100-2 | 4 |
| 22 | CAPSCREWS (MOTOR TO HEAD) | NIPPLE-B-0025x350 | 1 |
| 23 | 1/4" NIPPLE | CLP-FCB-0025 | 1 |
| 24 | 1/4" FULL COUPLING | CMPTG-R-MELL-038-025 | 1 |
| 25 | 1/4" 90° COMPRESSION FITTING | PF-PLUS90-SLD-B-0025 | 1 |
| 26 | 1/4" PIPE PLUG | WRGRING-SDPWR0189 | 1 |
| 27 | WEARING RING (HEAD) | | 1 |