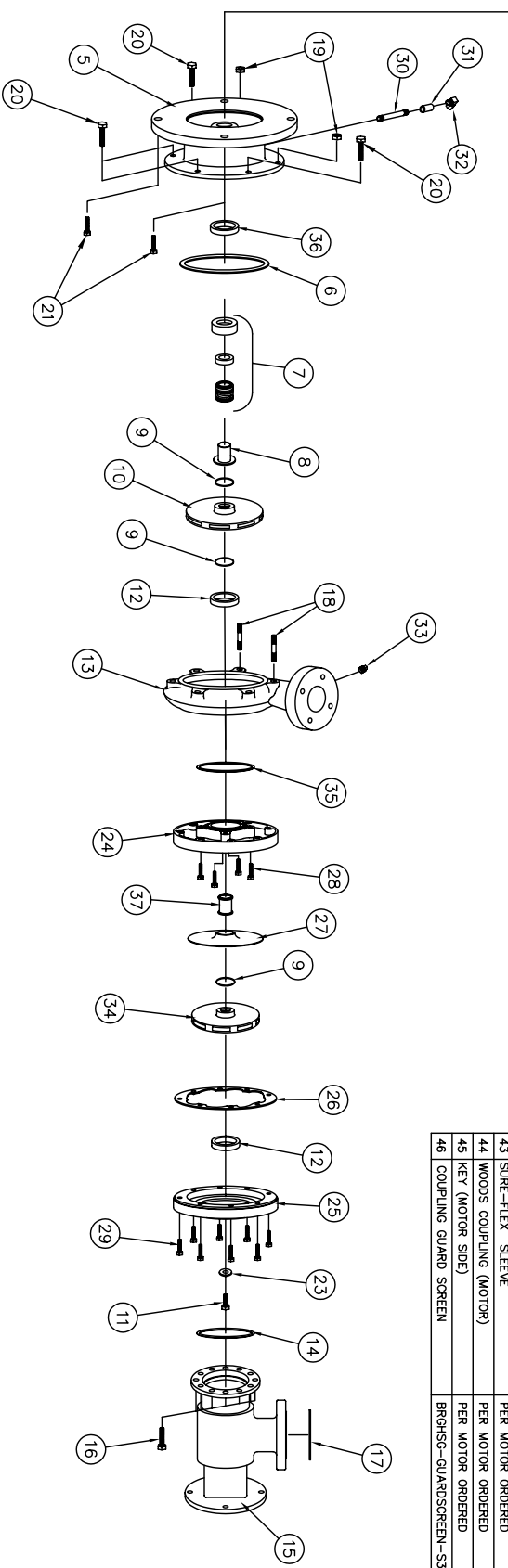
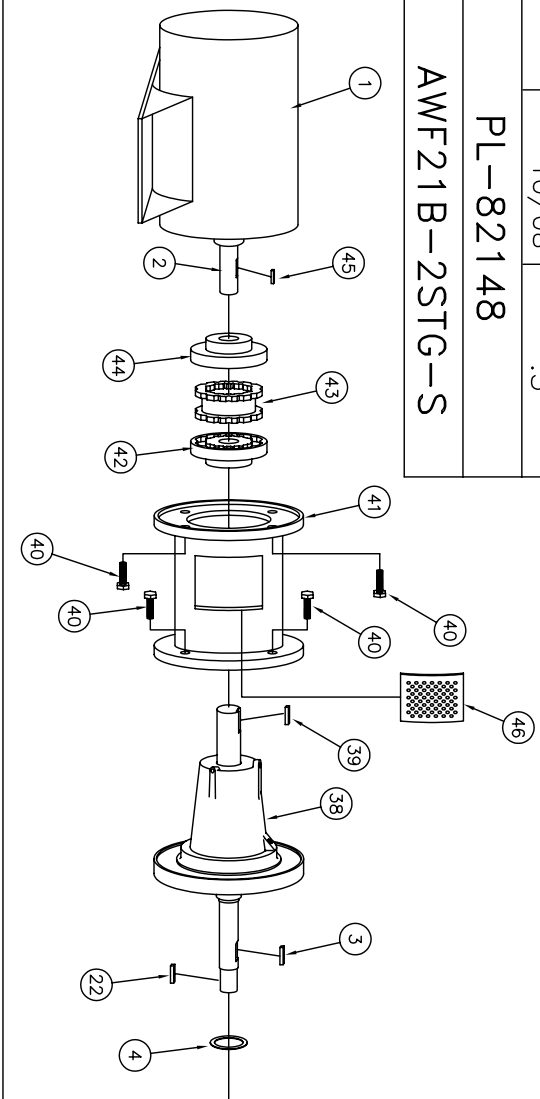


# SHIPCO® PUMPS

MANUFACTURED BY  
 SHIPPENSBURG PUMP COMPANY INC.  
 P.O. Box 279 Shippensburg, Pa. 17257  
 PHONE 717 532-7321 / FAX 717 532-7704  
 WWW.SHIPCO.PUMPS.COM

**221 AWF-B Vertical & Horizontal**  
**182,184,213,215**  
**254 & 256TC Frame**  
**Three Phase Flexible Coupled**

DRAWN BY M.E.R. DATE 10/08 REVISION .3  
 PARTS LIST # PL-82148  
 QUBE PART # AWF21B-2STG-S



PARTS LIST			
NO.	DESCRIPTION	PART NO.	QTY.
1	MOTOR / BEARING HOUSING	TC FRAME	1
2	MOTOR SHAFT		1
3	KEY (2nd STAGE)	KEYBAR-S8-019-OVR	1
4	WATER SLINGER	SLINGER-SDWS69998	1
5	PUMP HEAD	HEAD-SDPH00060-1-A	1
6	HEAD GASKET (O-RING)	ORING-SDP000089	1
7	MECHANICAL SEAL 1 1/8"	MCHSEAL-SDPS00155-SV	1
8	SHAFT SLEEVE	SHTSLV-SDPC00218	1
9	"O" RING (SHAFT SLEEVE)	ORING-SDP000051	3
10	IMPELLER (2nd STAGE)	IMP-SDP000600-C	1
11	CAPSCREW 3/8 x 1"	FRCP-H58-0038C-0100-2	1
12	WEARING RING	WRGRING-SDPMR0190	2
13	PUMP CASE	CASE-SDPC00652	1
14	SUCTION HOUSING GASKET	ORING-SDPC03829	1
15	SUCTION HOUSING	SUCHSG-5333376	1
16	CAPSCREWS (SUCTION HOUSING)	FRCP-SHZ-0038C-0125-2	12
17	SUCTION GASKET	FLG-ASA-SP15-GRT-0300	1
18	STUD (HEAD TO CASE)	FRSTUD-22-0038-0138-2	2
19	HEX NUT (HEAD TO CASE)	FRNUT-2HZ-0038C-2	2
20	CAPSCREWS (MOTOR TO HEAD)	FRCP-SHZ-0038C-0100-2	4
21	CAPSCREWS (MOTOR TO HEAD)	FRCP-SHZ-0038C-0125-2	4
22	KEY (1st STAGE)	KEYBAR-S8-019-OVR	1
23	IMPELLER WASHER	IMPWHR-SDPRW0237	1
24	TWO-STAGE 2nd PASSAGE	PASSAGE-SDPP00116-B	1
25	TWO-STAGE 1st PASSAGE	PASSAGE-SDPP00115-A	1
26	GASKET (1st to 2nd Passage)	GASKET-SDPP00120	1
27	DIVIDER PLATE	DVPLT-SDPP00117	1
28	CAPSCREWS (1st STAGE TO CASE)	FRCP-SKZ-0038C-0100-2	4
29	CAPSCREWS (1st to 2nd PASSAGE)	FRCP-SKZ-0038C-0175-2	8
30	1/4" NIPPLE	NIPPLE-B-025X350	1
31	1/4" FULL COUPLING	CLP-F08-0025	1
32	1/4" 90° COMPRESSION FITTING	CMPTG-R-MELL-038-025	1
33	1/4" PIPE PLUG	PF-PLUGSC-SLD-B-0025	1
34	IMPELLER (FIRST STAGE)	IMP-SDP000600-B	1
35	O-RING	ORING-SDP000046	1
36	WEARING RING	WRGRING-SDPMR0189	1
37	SLEEVE (FIRST STAGE)	SHTSLV-SDPC00272	1
38	BEARING ASSEMBLY	BRGHS-G-SDPBH000680	1
39	KEY (PUMP SIDE)	KEYBAR-S8-025-OVR	1
40	CAPSCREWS	FRCP-SHZ-0050C-0100-2	8
41	ADAPTOR ASSEMBLY	BRGHS-G-SDPH00587	1
42	WOODS COUPLING (PUMP SIDE)		PER MOTOR ORDERED
43	SURE-FLEX SLEEVE		PER MOTOR ORDERED
44	WOODS COUPLING (MOTOR)		PER MOTOR ORDERED
45	KEY (MOTOR SIDE)		PER MOTOR ORDERED
46	COUPLING GUARD SCREEN	BRGHS-G-GLDRSCREEN-53333331	1