

SHIPCO® PUMPS

MANUFACTURED BY
SHIPPENSBURG PUMP COMPANY INC.
P.O. Box 279 Shippensburg, Pa. 17257
PHONE 717 532-7321 / FAX 717 532-7704
WWW.SHIPCOPUMPS.COM

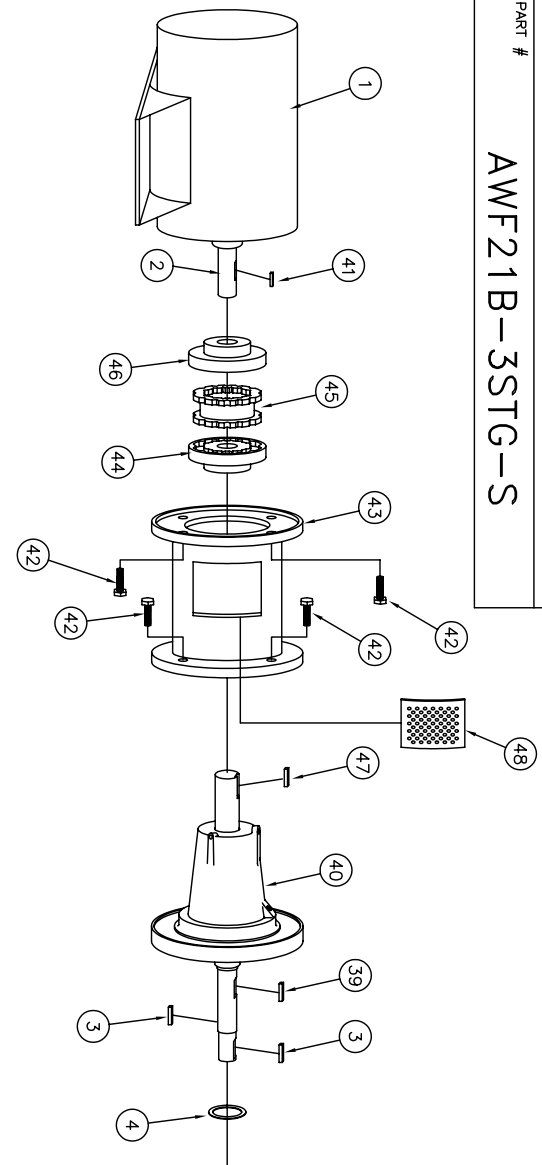
SHIPCO® IS A REGISTERED TRADEMARK OF SHIPPENSBURG PUMP CO., INC.

321 AWF-B Vertical & Horizontal 215, 254 & 256 TC Frame Three Phase Flexible Coupled

DRAWN BY M.E.R. DATE 10/08 REVISION .3

PARTS LIST # PL-82149

QUEB PART # AWF21B-3STG-S



PARTS LIST			
NO.	DESCRIPTION	PART NO.	QTY.
1	MOTOR / BEARING HOUSING	TC FRAME	1
2	MOTOR SHAFT	KEYBAR-S8-025-OVR	1
3	KEY (1st & 2nd STAGE)	SLINGER-SDPW59997	1
4	WATER SLINGER	HEAD-SDPH00346-A	1
5	PUMP HEAD	ORING-SDP000089	1
6	HEAD GASKET (O-RING)	MCHSEAL-SDP500355-SV	1
7	MECHANICAL SEAL 1 1/2"	SH1SLVE-SDP000348	1
8	SHAFT SLEEVE	ORING-SDP000052	6
9	T* RING (SHAFT SLEEVE)	IMP-SDP00600-1-D	1
10	IMPELLER (3rd STAGE)	IMP-SDP00600-1-E	1
11	IMPELLER (2nd STAGE)	FTRCP-H58-0050C-0100-2	1
12	CAPSCREW 1/2 x 1	WRGRING-SDPWR0190	3
13	WEARING RING	CASE-SDP000652	1
14	PUMP CASE	ORING-SDP003829	1
15	SUCTION HOUSING GASKET	SUCHSG-53333376	1
16	SUCTION HOUSING	FTRCP-5HZ-0038C-0125-2	12
17	CAPSCREWS (SUCTION HOUSING)	FLG-ASA-SP15-CKT-0300	1
18	SUCTION GASKET	FTRSTUD-2Z-0038-0138-2	2
19	STUD	FTRNUT-2HZ-0038C-2	2
20	HEX NUT	FTRCP-5HZ-0038C-0100-2	2
21	CAPSCREWS (HEAD TO CASE)	FTRCP-5HZ-0038C-0125-2	4
22	CAPSCREWS (MOTOR TO HEAD)	IMPWHR-SDPRW0749	1
23	IMPELLER WASHER	PASSAGE-SDPP00116-C	2
24	TWO-STAGE 2nd PASSAGE	PASSAGE-SDPP00115-A	2
25	TWO-STAGE 1st PASSAGE	GASKET-SDPP00120	2
26	GASKET	SH1SLVE-SDP000347	1
27	SLEEVE (2nd PASSAGE)	DIVPLT-SDPP000349	2
28	DIVIDER PLATE	FTRCP-5KZ-0038C-0100-2	8
29	CAPSCREWS (1st STAGE TO CASE)	FTRCP-5HZ-0038C-0175-2	16
30	CAPSCREWS (1st to 2nd PASSAGE)	NIPPLE-B-0025X350	1
31	1/4" NIPPLE	CLP-F08-0025	1
32	1/4" FULL COUPLING	CPMFTG-R-MELL-038-025	1
33	1/4" O-RING	PF-PLUSO-SLD-B-0025	1
34	1/4" PIPE PLUG	IMP-SDP000600-1-F	1
35	IMPELLER (FIRST STAGE)	ORING-SDP000046	2
36	O-RING	WRGRING-SDPWR0189	1
37	WEARING RING	SH1SLVE-SDP000352	1
38	SLEEVE (FIRST STAGE)	WV120-SDPK00289	1
39	KEY (3rd STAGE)	BRHSG-SDPH00681	1
40	BEARING ASSEMBLY	BRHSG-SDPH00681	1
41	KEY (MOTOR SIDE)	PER MOTOR ORDERED	1
42	CAPSCREWS	FTRCP-5HZ-0050C-0100-2	8
43	ADAPTOR ASSEMBLY	BRHSG-SDPH00587	1
44	WOODS COUPLING (PUMP SIDE)	PER MOTOR ORDERED	1
45	SURE-FLEX SLEEVE	PER MOTOR ORDERED	1
46	WOODS COUPLING (MOTOR)	PER MOTOR ORDERED	1
47	KEY (PUMP SIDE)	KEYBAR-S8-025-OVR	1
48	COUPLING GUARD SCREEN	BRHSG-CUARDSCREEN-53333331	1

