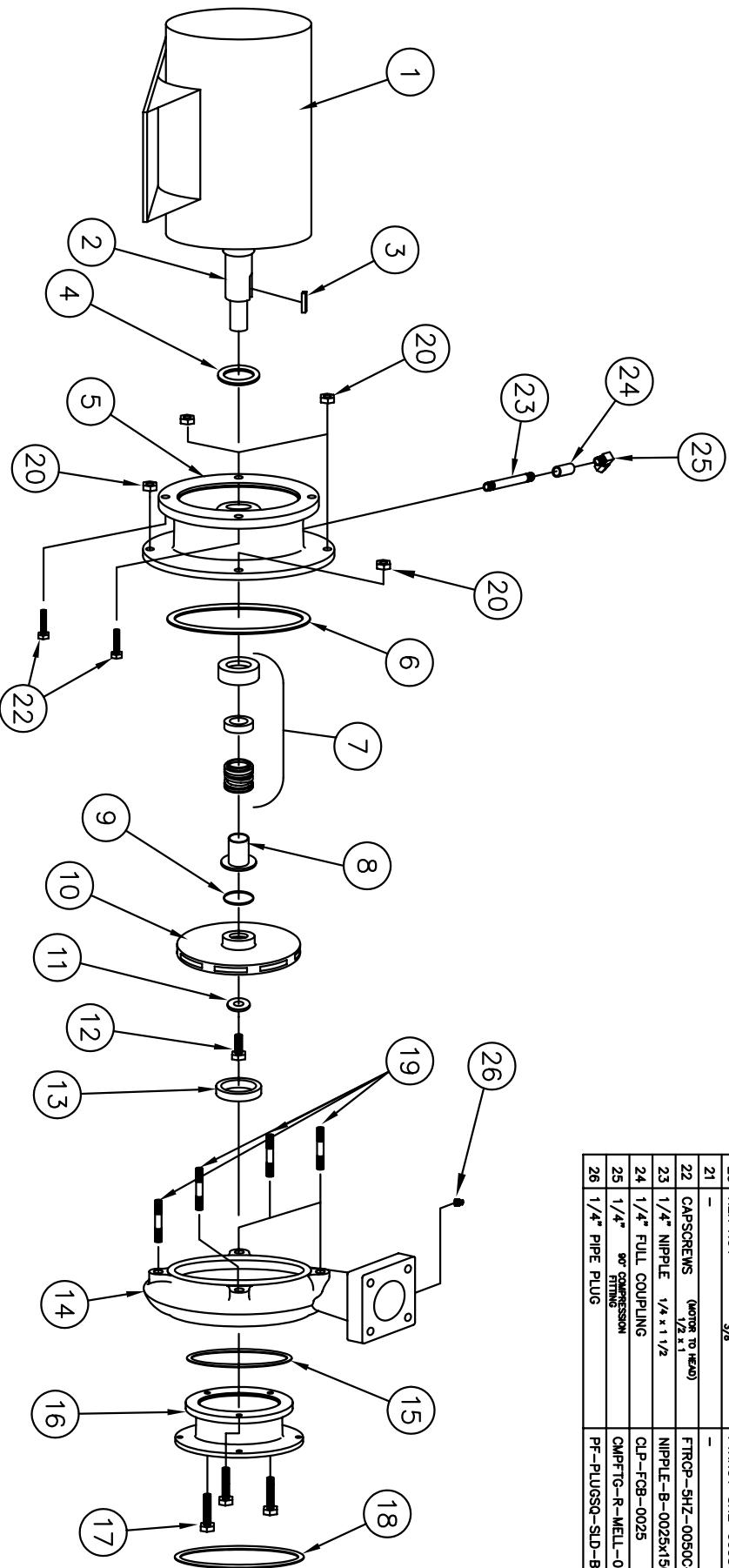


SHIPCO PUMPS

MANUFACTURED BY
 SHIPPENSBURG PUMP COMPANY INC.
 P.O. Box 279 Shippensburg, Pa. 17257
 PHONE 717 532-7321 / FAX 717 532-7704
 WWW.SHIPCO PUMPS.COM
 SHIPCO® IS A REGISTERED TRADEMARK OF SHIPPENSBURG PUMP CO., INC.

127 Model D Horiz End Suction JM Frame's 213 and 215

DRAWN BY J. BROOKENS	DATE 3/10	REVISION .1
PARTS LIST #	PL-82724	
QUOTE PART #	127DHJML	



PARTS LIST			
NO.	DESCRIPTION	PART NO.	QTY.
1	MOTOR	JM FRAME	1
2	MOTOR SHAFT		1
3	KEY (MOTOR TO IMPELLER)	KEYBAR-S8-019-OVR	1
4	WATER SLINGER	SLINGER-SDWS99998	1
5	PUMP HEAD	HEAD-SDPH00133-1	1
6	HEAD GASKET	GASKET-SDP03826	1
7	MECHANICAL SEAL 1 1/8"	MORSEAL-SDPS00155	1
8	SHAFT SLEEVE	SHTSLVE-SDPC00218	1
9	"O" RING (SHAFT SLEEVE)	ORING-SDP000051	1
10	IMPELLER	IMP-SDP100145	1
11	IMPELLER WASHER	IMPWHR-SDPRW00237	1
12	CAPSCREW 3/8 x 1"	FTRCP-HS8-0038C-0100-2	1
13	WEARING RING	WRGRING-SDPWR00333	1
14	PUMP CASE	CASE-SDPC000047	1
15	SUCTION HOUSING O-RING	ORING-SDP000046	1
16	SUCTION HOUSING	SLUCHSG-SDPS00050-B	1
17	CAPSCREWS (suction housing to case)	FTRCP-SHZ-0038C-0100-2	3
18	SUCTION GASKET	FLG-ASA-SP15-GKT-0300	1
19	STUD (HEAD TO CASE) (HEAD TO CASE)	FTRSTUD-2P-0038C-0138-2	4
20	HEX NUT (HEAD TO CASE)	FTRNUT-SHZ-0038C-2	4
21	-	-	-
22	CAPSCREWS (MOTOR TO HEAD) 1/2 x 1	FTRCP-SHZ-0050C-0100-2	4
23	1/4" NIPPLE 1/4 x 1 1/2	NIPPLE-B-0025x150	1
24	1/4" FULL COUPLING	CLP-FCB-0025	1
25	1/4" 90° COMPRESSION FITTING	CMPTFG-R-MELL-025-025	1
26	1/4" PIPE PLUG	PF-PLUGSQ-SLD-B-0025	1