

SHIPCO PUMPS

MANUFACTURED BY

SHIPPENSBURG PUMP COMPANY INC.

P.O. Box 279 Shippenburg, Pa. 17257

PHONE 717 532-7321 / FAX 717 532-7704

WWW.SHIPCO.PUMPS.COM

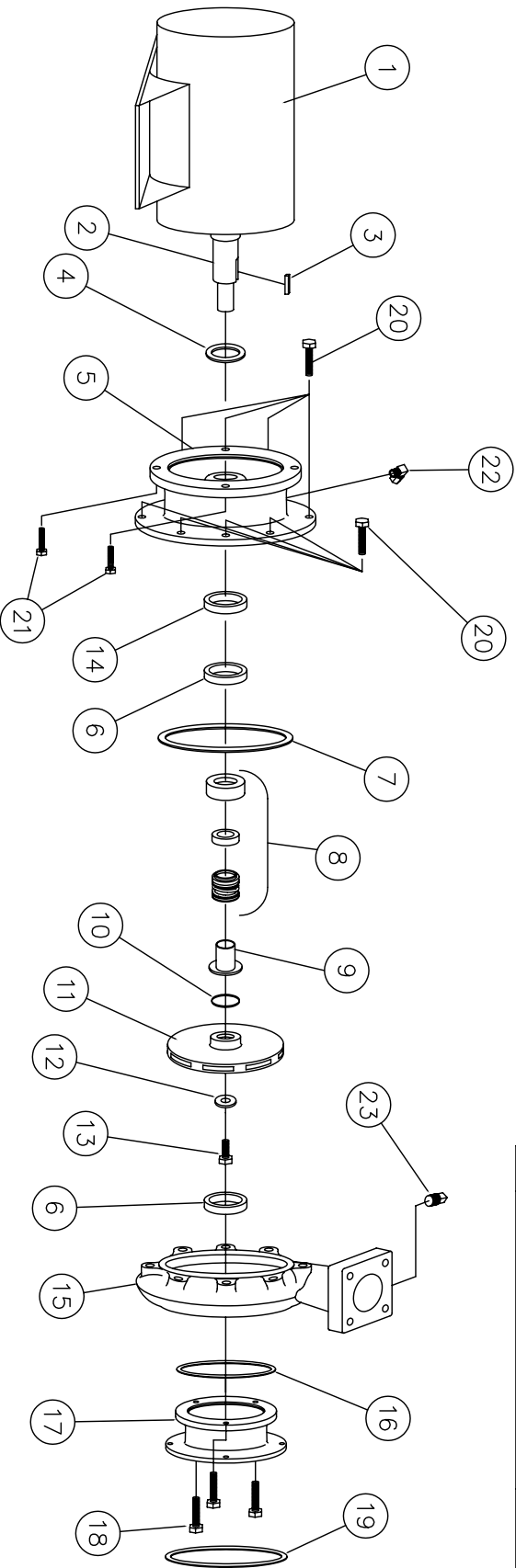
SHIPCO® IS A REGISTERED TRADEMARK OF SHIPPENSBURG PUMP CO., INC.

**129 Model D Horiz End Suction
JM Frames 284, 286, 324, & 326
Above 130 GPM (3500 RPM)**

DRAWN BY M. REED DATE 3/05 REVISION .0

PARTS LIST # PL-82918-A

QUEB PART # 129ADHJM+(35)Z



PARTS LIST

NO.	DESCRIPTION	PART NO.	QTY.
1	MOTOR	JM FRAME	1
2	MOTOR SHAFT		1
3	KEY (MOTOR TO IMPELLER)	KEYBAR--S8-025-0VR	1
4	WATER SLINGER	SLINGER--SDWS99997	1
5	PUMP HEAD	HEAD--SDPH00017	1
6	WEARING RING	WRGRING--SDPWR00653	2
7	HEAD GASKET (O-RING)	ORING--SDP000083	1
8	MECHANICAL SEAL 1 1/2"	MCHSEAL--SDPS00355	1
9	SHAFT SLEEVE	SHTSLEEVE--SDPC00302	1
10	"O" RING (SHAFT SLEEVE)	ORING--SDP000211	1
11	IMPELLER	IMP--SDPI00661-D	1
12	IMPELLER WASHER	IMPWHR--SDPRW00325	1
13	CAPSCREW 1/2 x 1"	FTRCP--HS8-0050C-0100-2	1
14	WEARING RING ADAPTER	WRGRING--SDPA00704	1
15	PUMP CASE	CASE--SDPC00061-D	1
16	SUCTION HOUSING GASKET	GASKET--SDPG03836	1
17	SUCTION HOUSING	SUCHSG--SDPF00025	1
18	CAPSCREWS (SUCTION HOUSING TO CASE) 3/8 x 1 1/4"	FTRCP--SHZ-0038C-0125-2	3
19	SUCTION GASKET	FLG--ASA-SP15-GKT-0400	1
20	CAPSCREWS (HEAD TO CASE) 3/8 x 1"	FTRCP--SHZ-0038C-0100-2	8
21	CAPSCREWS (MOTOR TO HEAD) 5/8 x 1 3/4"	FTRCP--SHZ-0063C-0175-S	4
22	1/4" 90° COMPRESSION FITTING	CMPFTG--R-MELL-038-025	1
23	1/4" PIPE PLUG	PP-PLUGSQ--SLD-B-0025	1