

# SHIPCO PUMPS

MANUFACTURED BY

SHIPPENSBURG PUMP COMPANY INC.

P.O. Box 279 Shippensburg, Pa. 17257

PHONE 717 532-7321 / FAX 717 532-7704

WWW.SHIPCO PUMPS.COM

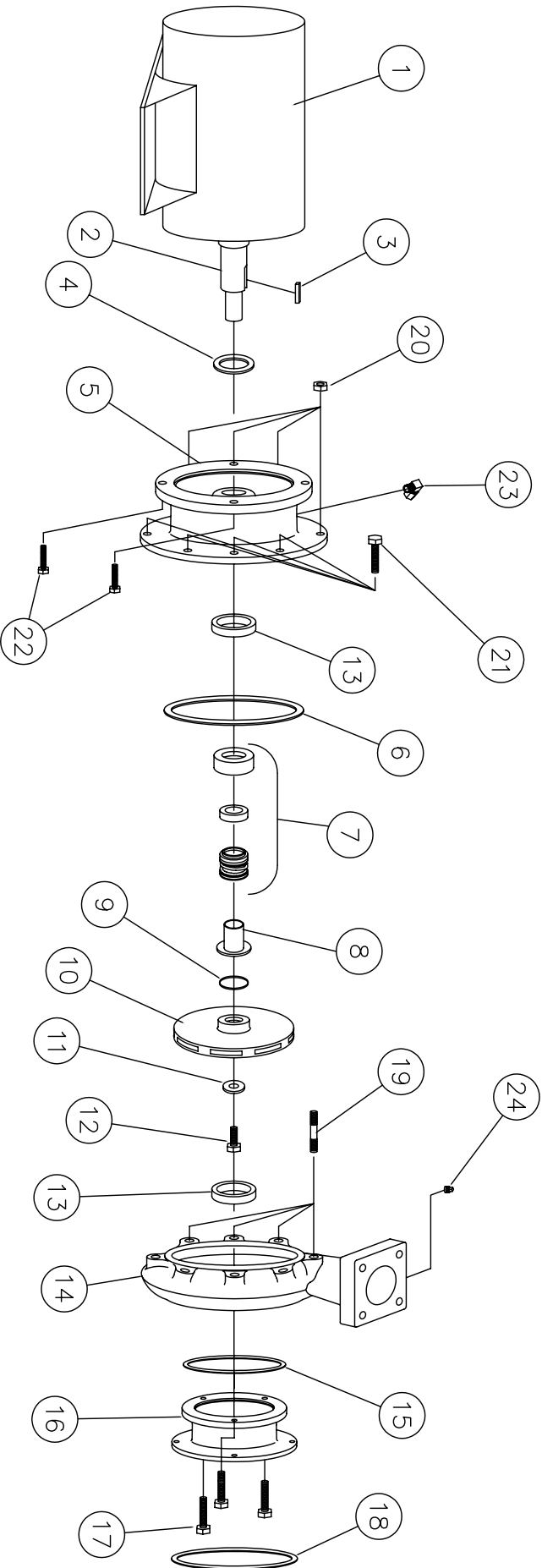
SHIPCO® IS A REGISTERED TRADEMARK OF SHIPPENSBURG PUMP CO., INC.

131 Model D Horiz End Suction  
JM Frame's 284, 286, 324, & 326  
3500 RPM

DRAWN BY J.BROOKENS DATE 9/04 REVISION .3

PARTS LIST # PL-83110

QUEB PART # 131DHDJM(35)Z



PARTS LIST			
NO.	DESCRIPTION	PART NO.	QTY.
1	MOTOR	JM FRAME	1
2	MOTOR SHAFT		1
3	KEY (MOTOR TO IMPELLER)	KEYBAR-S8-025-OVR	1
4	WATER SLINGER	SLINGER-SDWS9997	1
5	PUMP HEAD	HEAD-SDPH00017	1
6	HEAD GASKET (O-RING)	ORING-SDP000088	1
7	MECHANICAL SEAL 1 1/2"	MCHSEAL-SDPS00355	1
8	SHAFT SLEEVE	SHTSLVE-SDPC00302	1
9	"O" RING (SHAFT SLEEVE)	ORING-SDP000211	1
10	IMPELLER	IMP-SDPI00019	1
11	IMPELLER WASHER	IMPWHR-SDPRW00350	1
12	CAPSCREW	FTRCP-HS8-0050C-0100-2	1
13	WEARING RING	WRGRING-SDPWR00016	2
14	PUMP CASE	CASE-SDPC00018	1
15	SUCTION HOUSING GASKET	GASKET-SDPG03836	1
16	SUCTION HOUSING	SUCHSG-SDPFF00025	1
17	CAPSCREWS (SUCTION HOUSING TO CASE)	FTRCP-SHZ-0038C-0125-2	3
18	SUCTION GASKET	FLG-ASA-SP15-GKT-0400	1
19	STUD	FTRSTUD-2P-0038C-0138-2	4
20	HEX NUT	(HEAD TO CASE) (HEAD TO CASE)	4
21	CAPSCREWS	(MOTOR TO HEAD) (MOTOR TO CASE)	4
22	CAPSCREWS	(MOTOR TO HEAD) (MOTOR TO CASE)	4
23	1/4" 90° COMPRESSION FITTING	CPMFTG-R-MELL-038-025	1
24	1/4" PIPE PLUG	PF-PLUSSQ-SLD-B-0025	1