

SHIPCO® PUMPS

MANUFACTURED BY

SHIPPENSBURG PUMP COMPANY INC.

P. O. Box 279 Shippensburg, Pa. 17257

PHONE 717 532-7321 / FAX 717 532-7704

WWW.SHIPCO-PUMPS.COM

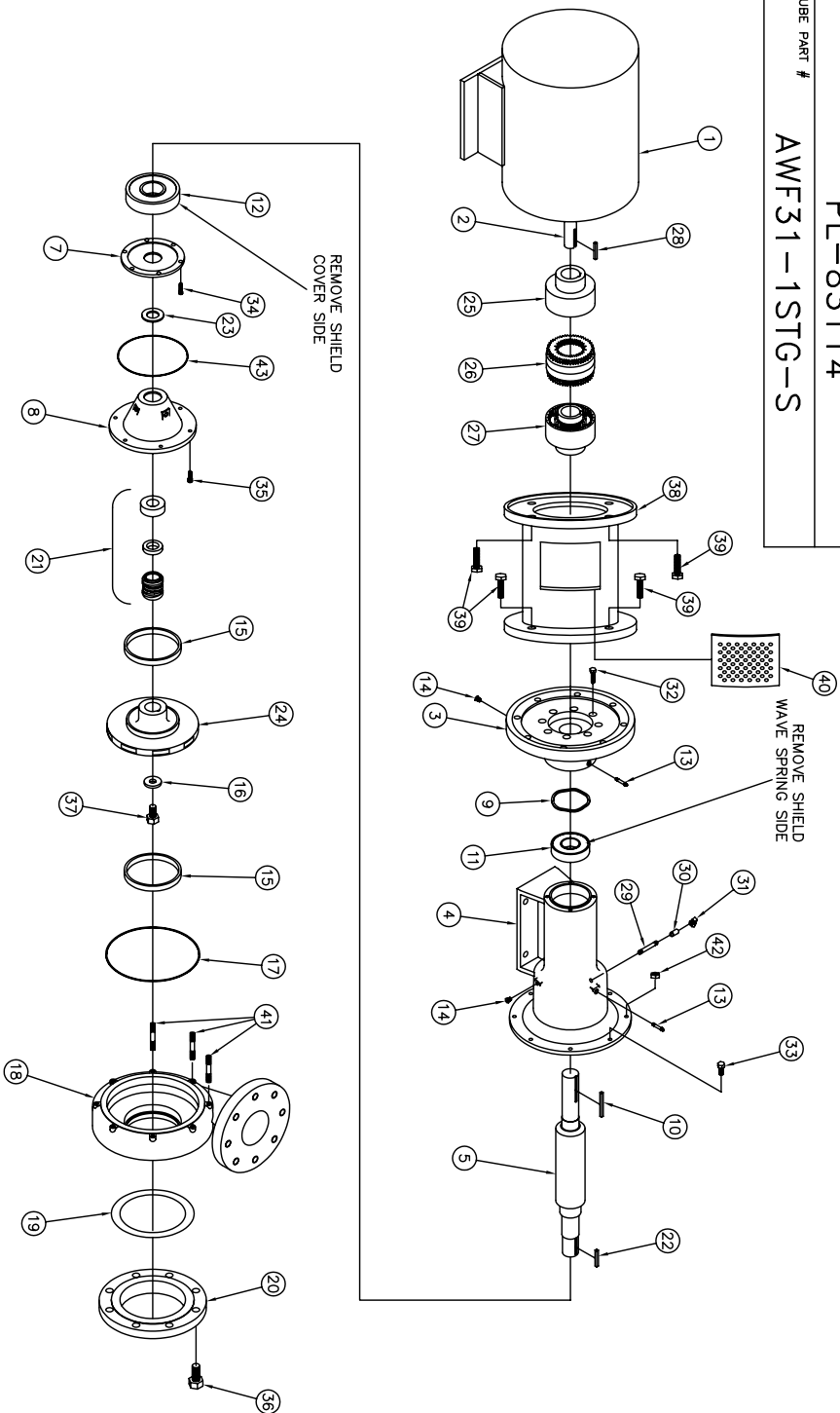
SHIPCO® IS A REGISTERED TRADEMARK OF SHIPPENSBURG PUMP CO., INC.

131 AWF Model Horizontal 256 TC Frame Three Phase Flexible Coupled

DRAWN BY M.E.R. DATE 6/07 REVISION .4

PARTS LIST # PL-83114

CUBE PART # AWF31-1STG-S



BEARING HOUSING ASSEMBLY SDPBH00695

PARTS LIST

NO.	DESCRIPTION	PART NO.	QTY.
1	MOTOR / BEARING HOUSING	TC/JM FRAME	1
2	MOTOR SHAFT	BRHSG-SDP00634	1
3	COVER - IDLER BEARING	BRHSG-SDPBH00625	1
4	BEARING HOUSING	BRHSG-SDP500635	1
5	SHAFT - FLEX COUPLED	BRHSG-SDP00626	1
7	BEARING RETAINING COVER	BRHSG-SDP500627-A	1
8	SEAL CASING	BRHSG-WA5SPRG-SSB-0394	1
9	WAVE SPRING	KEYBAR-S8-038-OVR	1
10	KEY (PUMP SIDE) 3/8 x 3	BRHSG-BRG-6309-2RS	1
11	BEARING	BRHSG-BRG-6314-ZZ	1
12	BEARING	GREASE-FTG ST	2
13	GREASE FITTING	GREASFT-RELIEF-0013	2
14	PRESSURE RELIEF VENT	WRGRING-SDPWR00624	2
15	WEARING RING	IMPWHR-SDPWR00630	1
16	IMPELLER WASHER	ORING-SDP000083	1
17	O-RING	CASE-SDP000620	1
18	VOLUTE CASE	FLG-ASA-SP15-GKT-0600	1
19	GASKET	FLG-ASA-SP15-0600	1
20	6" ASA FLANGE	MCHSAL-SDP500698-SV	1
21	MECHANICAL SEAL 1 3/4"	KEYBAR-S8-028-OVR	1
22	KEY (IMPELLER) 1/4 x 1 3/4	SLNGFR-SDWS99997	1
23	WATER SLINGER	IMP-SDP00075	1
24	IMPELLER	FLEXCLP-85-0163-0038	1
25	WOODS COUPLING (MOTOR)	FLEXCLP-SLVE-8UNS	1
26	SURE-FLEX SLEEVE	FLEXCLP-85-0163-0038	1
27	WOODS COUPLING (PUMP SIDE)	KEYBAR-S8-038-OVR	1
28	KEY (MOTOR SIDE) 3/8 x 2 1/2	NIPPLE-B-0025x250	1
29	1/4" NIPPLE 1/4 x 2 1/2	CLP-FCB-0025	1
30	1/4" FULL COUPLING	CPMFTG-R-MELL-038-025	1
31	1/4" 90° COMPRESSION FITTING	FTRCP-5KZ-0038C-0175-2	6
32	CAPSCREW (COUPLING TO VOLUME) 3/8 x 1 3/4	FTRCP-5KZ-0038C-0075-2	5
33	HEX SCREW (HOUSING TO VOLUME) 3/8 x 3/4	FTRCP-5KZ-0025C-0050-2	6
34	CAPSCREW (COUPLER TO HOUSING) 5/16 x 3/4	FTRCP-5KZ-0031C-0075-2	6
35	HEX SCREW (SEAL CASING TO HOUSING) 5/16 x 3/4	FTRCP-5HZ-0075C-0175-2	8
36	HEX SCREW (SHAFT) 1/2 x 3/4	FTRCP-5HZ-0050C-0075-2	1
37	HEX SCREW	BRHSG-5333350	1
38	COUPLING GUARD	FTRCP-5HZ-0050C-0125-2	12
39	MOUNTING BOLT	BRHSG-5333354	1
40	COUPLING GUARD SCREEN	FTRSTUD-2P-0038C-0138-2	3
41	STUD (COUPLING TO VOLUME) 3/8 x 1 3/8	FTRNUT-5HZ-0038C-2	3
42	HEX NUT (HOUSING TO VOLUME) 3/8	ORING-SDP000728	1
43	O-RING		1